



**DECORATIVE HARDWARE**

Catalog 17

# TABLE OF CONTENTS

Look for New Collections



Scan Me!

Find QR codes throughout the catalog and scan for instant access to additional information on collection offerings, program details, and more!



Design and photos by Jennifer Hutton at Artisan Kitchens and Baths, @JenniferHutton\_Pro



Design and photos by Jennifer Hutton at Artisan Kitchens and Baths, @JenniferHutton\_Pro



## TRANSITIONAL

### CLASSIC COMFORT

<b>Series Introduction</b>	<b>13</b>
Aspire	15
Brookridge	17
Connections	20
Designers' Group Ten	23
Dierdra	25
Domestic Bliss	29
Euro Moderno	31
Forté	32
Meadow	33
Oasis	36
Rivet Rebel	37
Subtle Surge	41
Tempo	43

## CONTEMPORARY

### UPTOWN APPEAL

<b>Series Introduction</b>	<b>47</b>
Bravo	49
Elevate	53
Epoch Edge	55
Fluidic	58
Laura	60
Metro	63
Radial Reign	65
Skyline	67
Stainless Steel	69
Studio	70
Swagger	71

## TRADITIONAL

### TIMELESS CHARM

<b>Series Introduction</b>	<b>73</b>
American Classics	75
Andante	78
Echo	80
Euro Traditions	81
Harmony	82
Hearthstone	85
Hillcrest	87
Prelude	88
Tailored Traditional	91
Vested Interest	93
Vibrato	95
Village	98

## CRAFTSMAN

### ARTISAN INSPIRED

<b>Series Introduction</b>	<b>99</b>
Art Nouveau	101
Rhapsody	102

<b>General Information</b>	
What's New	4
Samplicity	6
Online Ordering	8
QR Codes	10
Finish Guide	11
Appliance Pulls	103
Additional Lines	105
Installation Guide	108
Display Boards	110
Display Towers	121
Display Accessories	122
FAQ	126
Key to Codes	128
Part Number Index	129



# WHAT'S NEW

Scan the QR Code for more details!



## RIVET REBEL

Inspired by the blue-collar workers of the rail during the industrial revolution, Rivet Rebel ties together home trends and history. This **transitional** bar pull design offers simple, sleek rectangular geometry that is complemented with **rivet detailing** on the posts.

Stomp the dirt off of your work boots and admire the clean lines of this hardworking collection.

*Go ahead, be a rebel.*

Find this collection on page 37.  
View the display board on page 112.



## RADIAL REIGN

Royalty has fascinated people for centuries. The regal glamour and distinctive style that flows from those who reign is the creativity behind the **contemporary** Radial Reign collection.

The **knurling design** provides a majestic shimmer or **noble** texture depending on what finish is chosen as the crowns of your cabinets.

*Rule your kitchen* with this stunning decorative hardware.

Find this collection on page 65.  
View the display board on page 115.



# SAMPLICITY

Scan the QR Code for more details!

## BENEFITS

We want to ensure that our customers are confident in their purchase with us, which is why we make ordering samples simple and convenient. Through Samplcity, our industry-leading sample program, we provide a hassle-free customer experience and more samples than anyone else!

Sample requests can be placed through our website, [www.BerensonHardware.com](http://www.BerensonHardware.com) by industry professionals who have a registered account. Samples will be sent directly to the address provided.

## FREE SAMPLE CLIP

As a bonus, you can choose to receive a free sample clip with your order. This unique clip lets you preview how our hardware looks on your cabinet door or drawer without the commitment of drilling holes.

Choose between a 1in. clip, best for doors, or a 3in. clip, best for drawers.

## NUMBER OF SAMPLES

Order up to 5 samples.  
(Limit of 1 piece per style).

## PRODUCTS INCLUDED

Berenson and Advantage Plus by Berenson knobs and pulls of 160mm CC or less.

**PLEASE NOTE:** Longer lengths and R. Christensen by Berenson hardware can be ordered as a sample at 50% off MSRP with paid flat rate shipping (\$4 per part). Hooks, latches and appliance pulls are not available as samples.

*Sample parts are not for display.  
Please contact us for display items and options.*

## SHIPPING

Free samples also qualify for free shipping! All samples are shipped via USPS mail.

**You must have a mail receptacle to receive the package.**



## 3 EASY STEPS

1

**Log in to your account** at [www.BerensonHardware.com](http://www.BerensonHardware.com).

Find the part you would like a sample of and click on its item number or description.

This will bring up the Item Detail page and the **Request A Sample** button.

2

A window will pop up requesting **shipping info** and credit card info, if the sample requires a payment.

3

After you fill in the required information, click **Submit Sample Request** and your request will be processed.

Featuring the Metro Collection in Brushed Nickel with 1in. Sample Clip



Featuring the Hearthstone Collection in Matte Black



# ONLINE ORDERING

Scan the QR Code for more details!



## GAIN ACCESS TO ACCOUNT TOOLS & More!

Anyone with a Berenson customer account is eligible for online ordering through our website, [www.BerensonHardware.com](http://www.BerensonHardware.com).

Follow the steps below to register today!

### 3 EASY STEPS

1

#### CREATE ACCOUNT

Scan the QR code at the top of the page to be taken to our create account page. Enter your name and email address.

2

#### APPROVAL PROCESS

Check your email for a message from [Web@BerensonHardware.com](mailto:Web@BerensonHardware.com). This will include a link to fill out your business information.

*If you don't see a verification email in your inbox, be sure to check your junk mail and add the email address above to your safe sender's list.*

Once approved, you'll receive an email to log in to your account.

3

#### ORDER ONLINE

Use your web account to place orders at any time! You can also access various account tools to help you stay in the know about your Berenson orders.

#### FIND A STORE

Customers can use our [Find a Store](#) page to search for the closest showroom or distributor offering our hardware. Just enter your zip code or address to see a full list of nearby stores with Berenson product.

#### DON'T BUY DIRECT?

Industry professionals can still sign up for a web account, giving you access to product availability, favorites lists, and up to **5 free samples!**

#### ACCOUNT TOOLS

Access these tools and more with a web account:

- Order Tracking
- Recent Orders
- Invoices
- Backorders

For more information, contact:

[Sales@BerensonHardware.com](mailto:Sales@BerensonHardware.com) | 800.333.0578

Featuring the Brookridge Collection  
in Brushed Nickel



# QR CODES

Scan the QR Code for more details!



**Berenson is using QR codes on cabinet hardware display boards and catalogs, connecting customers with our website and instant access to up-to-date information.**

These QR codes can be scanned using an online QR code scanner or app on a smartphone or tablet. *(Please note the camera on some smartphones can also read QR codes).*

You can find QR codes throughout this catalog. Scanning them will bring you to pages on our website with additional information on the subject featured.

QR codes on our display boards will bring up a convenient-to-use page on our website, with **parts from the collection(s) featured on the board grouped by CC length**. This page is just a click away and offers information on all parts in the collection, including those not on the display board.

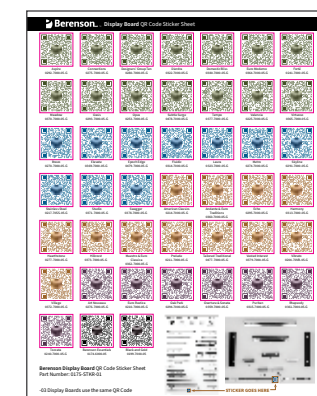
QR Code stickers are available for your existing Berenson boards. **Our sticker sheet, 0175-STKR-01**, contains a sticker for every Berenson board labeled with the collection name and display board part number for your convenience.

Order yours today by emailing  
[Orders@BerensonHardware.com](mailto:Orders@BerensonHardware.com)



MOBILE  
PREVIEW

OF ALL LENGTHS,  
FINISHES, AND  
PART NUMBERS!



BERENSON  
DISPLAY  
BOARD QR  
CODE STICKER  
SHEET

0175-STKR-01



# FINISH GUIDE

Scan the QR Code for more details!

*Berenson's Most Popular Finishes:*



55 Black / Matte Black / Satin Black



BPN Brushed Nickel



MDB Modern Brushed Gold



26 Polished Chrome



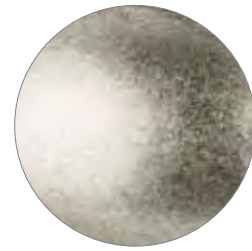
VB Verona Bronze



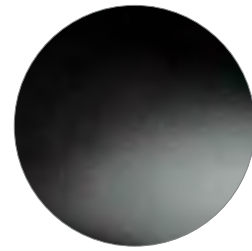
VTN Vintage Nickel



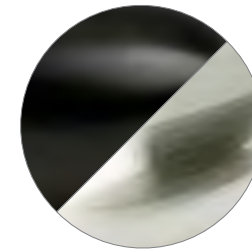
Aluminum  
**ALU**



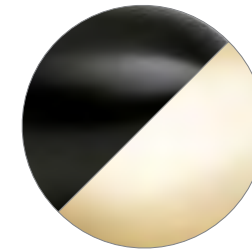
Antique Pewter  
**AP**



Black / Matte Black / Satin Black  
**55**



Matte Black and Brushed Nickel  
**55BPN**



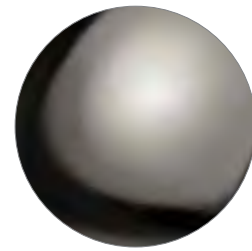
Matte Black and Modern Brushed Gold  
**55MDB**



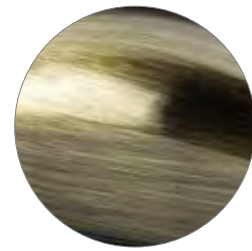
Modern Brushed Gold  
**MDB**



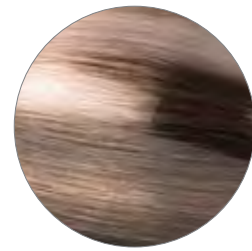
Oil Rubbed Bronze  
**ORB**



Black Nickel  
**98**



Brushed Antique Brass  
**BAB**



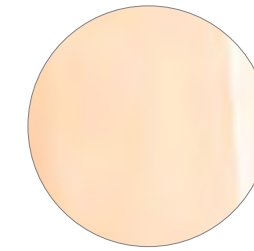
Brushed Antique Copper  
**BAC**



Polished Brass  
**03**



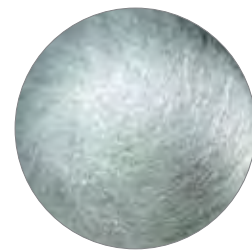
Polished Chrome  
**26**



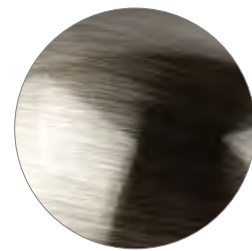
Polished Copper  
**PC**



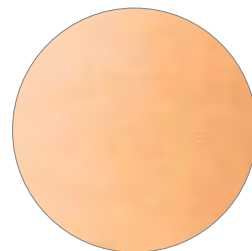
Polished Nickel  
**14**



Brushed Antique Pewter  
**BAP**



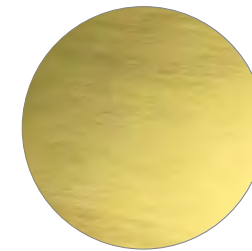
Brushed Black Nickel  
**BBN**



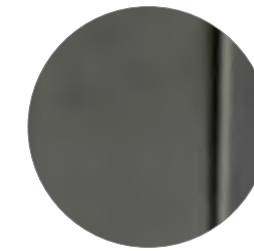
Brushed Copper  
**BC**



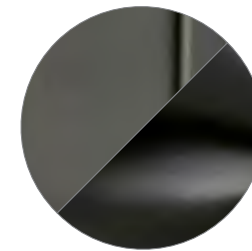
Rubbed Bronze  
**10**



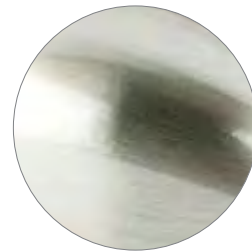
Satin Gold  
**SG**



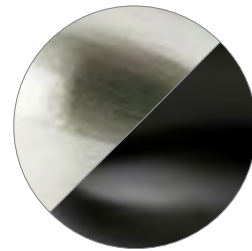
Slate  
**SLT**



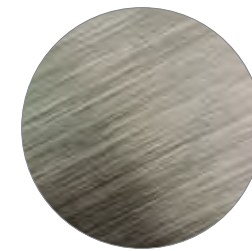
Slate and Matte Black  
**SLT55**



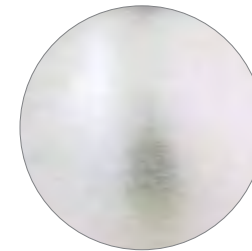
Brushed Nickel  
**BPN**



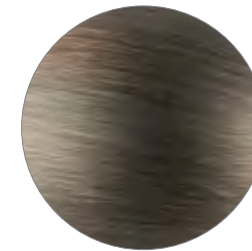
Brushed Nickel and Matte Black  
**BPN55**



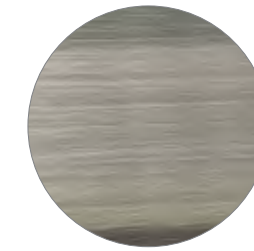
Brushed Tin  
**BT**



Stainless Steel  
**SS**



Verona Bronze  
**VB**



Vintage Nickel  
**VTN**



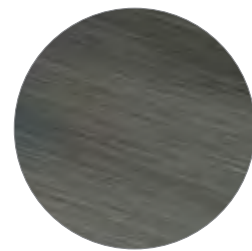
Weathered Copper  
**WC**



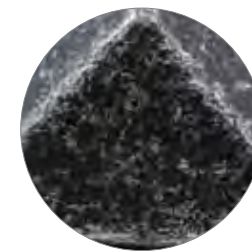
Dull Bronze  
**DBZ**



Dull Rust  
**FE**



Graphite  
**GPH**



Weathered Iron  
**LWI**



Weathered Nickel  
**WN**



Weathered Verona Bronze  
**WVB**

## Finish Selection Board Now Available!

This board is an easy reference tool for the finishes offered in Berenson collections. See page 119 to view the board.



# CLASSIC COMFORT

## TRANSITIONAL STYLE

Effortlessly blend elements like modern, soft curves into time-honored hardware designs & achieve transitional bliss.



Featuring the Domestic Bliss Collection in Modern Brushed Gold Design and photos by Jennifer Hutton at Artisan Kitchens and Baths, @JenniferHutton\_Pro





# ASPIRE

## CLASSIC COMFORT - Transitional Style

Collection Featured in Brushed Tin

Scan the QR Code above for more details!



**Appliance Pull  
Also Available**

18in. CC

160mm CC

128mm CC

96mm CC

Knob  
has tooth at bottom to  
help secure in position

### Aspire Product Data

CC	Product Type	Length	Width	Height/ Projection	Hand Clearance	Diameter	Base	Tap/Screws (Qty)
*18in.	Appliance Pull	18 3/8in.	1 1/2in.	1 13/16in.	1 3/8in.	-	1/2in.	10-24 x 1in. (2)
12in.	Appliance Pull	12 7/16in.	1in.	1 13/16in.	1 1/4in.	-	7/16in.	10-24 x 1in. (2)
160mm	Pull	6 1/2in.	1 1/16in.	1 1/4in.	15/16in.	-	5/16in.	8-32 x 1in. (2)
128mm	Pull	5 7/16in.	1 1/16in.	1 1/4in.	15/16in.	-	5/16in.	8-32 x 1in. (2)
96mm	Pull	4 1/8in.	1 1/16in.	1 1/4in.	13/16in.	-	5/16in.	8-32 x 1in. (2)
-	Knob	1 1/4in.	3/4in.	1 3/16in.	9/16in.	-	1 1/16in.	8-32 x 1in. (1)

\*Product not shown, please visit [www.BerensonHardware.com](http://www.BerensonHardware.com) to view images and details.

### Aspire Available Finishes, Sizes & Part Numbers

The pulls of this collection feature a flat underside on the handle.



BRUSHED COPPER

18in. CC	Not Available
12in. CC	2145-10BC-P
160mm CC	2144-10BC-P
128mm CC	2143-10BC-P
96mm CC	2142-10BC-P
Knob	2146-10BC-P



BRUSHED NICKEL

18in. CC	2148-1BPN-P
12in. CC	9240-1BPN-P
160mm CC	9237-1BPN-P
128mm CC	9234-1BPN-P
96mm CC	9231-1BPN-P
Knob	9243-1BPN-P



BRUSHED TIN

18in. CC	2149-10BT-P
12in. CC	9241-10BT-P
160mm CC	9238-10BT-P
128mm CC	9235-10BT-P
96mm CC	9232-10BT-P
Knob	9244-10BT-P



MATTE BLACK

18in. CC	2140-1055-P
12in. CC	2139-1055-P
160mm CC	2138-1055-P
128mm CC	2137-1055-P
96mm CC	2136-1055-P
Knob	2141-1055-P



MODERN BRUSHED GOLD

18in. CC	2134-1MDB-P
12in. CC	2133-1MDB-P
160mm CC	2132-1MDB-P
128mm CC	2131-1MDB-P
96mm CC	2130-1MDB-P
Knob	2135-1MDB-P



POLISHED CHROME

18in. CC	2147-1026-P
12in. CC	9239-1026-P
160mm CC	9236-1026-P
128mm CC	9233-1026-P
96mm CC	9230-1026-P
Knob	9242-1026-P



VERONA BRONZE

18in. CC	2150-10VB-P
12in. CC	2032-10VB-P
160mm CC	2031-10VB-P
128mm CC	2030-10VB-P
96mm CC	2029-10VB-P
Knob	2033-10VB-P

# BROOKRIDGE

## CLASSIC COMFORT - Transitional Style

Collection Featured in Verona Bronze

Scan the QR Code above for more details!



Appliance Pull  
Also Available

12in. CC

### Brookridge Product Data

CC	Product Type	Length	Width	Height/Projection	Hand Clearance	Diameter	Base	Tap/Screws (Qty)
*12in.	Appliance Pull	12 3/4in.	27/32in.	1 3/4in.	1 21/64in.	-	19/32in.	10-24 x 1in. (2)
224mm	Pull	9 11/32in.	11/16in.	1 3/8in.	1 1/2in.	-	15/32in.	8-32 x 1in. (2)
160mm	Pull	6 11/16in.	15/32in.	1 1/4in.	31/32in.	-	1/2in.	8-32 x 1in. (2)
128mm	Pull	5 7/16in.	15/32in.	1 1/4in.	31/32in.	-	1/2in.	8-32 x 1in. (2)
96mm	Pull	4 3/16in.	15/32in.	1 1/4in.	31/32in.	-	1/2in.	8-32 x 1in. (2)
-	① Knob	-	-	1 1/2in.	23/32in.	1 1/2in.	1/2in.	8-32 x 1in. (1)
-	② Knob	1 3/8in.	1 3/8in.	1 1/2in.	3/4in.	-	1/2in.	8-32 x 1in. (1)

\*Product not shown, please visit [www.BerensonHardware.com](http://www.BerensonHardware.com) to view images and details.

### Brookridge Available Finishes, Sizes & Part Numbers

The pulls of this collection feature a semi-curved underside on the handle.



BRUSHED NICKEL		MATTE BLACK		MODERN BRUSHED GOLD	
12in. CC	2635-1BPN-P	12in. CC	2636-1055-P	12in. CC	2639-1MDB-P
224mm CC	2630-1BPN-P	224mm CC	2631-1055-P	224mm CC	2634-1MDB-P
160mm CC	2625-1BPN-P	160mm CC	2626-1055-P	160mm CC	2629-1MDB-P
128mm CC	2620-1BPN-P	128mm CC	2621-1055-P	128mm CC	2624-1MDB-P
96mm CC	2615-1BPN-P	96mm CC	2616-1055-P	96mm CC	2619-1MDB-P
① Knob	2640-1BPN-P	① Knob	2641-1055-P	① Knob	2644-1MDB-P
② Knob	2645-1BPN-P	② Knob	2646-1055-P	② Knob	2649-1MDB-P



POLISHED CHROME		VERONA BRONZE	
12in. CC	2654-1026-P	12in. CC	2637-10VB-P
224mm CC	2653-1026-P	224mm CC	2632-10VB-P
160mm CC	2652-1026-P	160mm CC	2627-10VB-P
128mm CC	2651-1026-P	128mm CC	2622-10VB-P
96mm CC	2650-1026-P	96mm CC	2617-10VB-P
① Knob	2655-1026-P	① Knob	2642-10VB-P
② Knob	2656-1026-P	② Knob	2647-10VB-P



TRANSITIONAL

A *powerful* presence expands out to *elegant* surface details.



# CONNECTIONS

CLASSIC COMFORT - *Transitional Style*

Collection Featured in Verona Bronze

Scan the QR Code above for more details!



## Connections Available Finishes, Sizes & Part Numbers

The pulls of this collection feature a curved underside on the handle.



MATTE BLACK

160mm CC	4005-1055-P
96mm CC	4131-1055-P
3in. CC	4002-1055-P
Knob	4008-1055-P



VERONA BRONZE

160mm CC	4006-10VB-P
96mm CC	4132-10VB-P
3in. CC	4003-10VB-P
Knob	4009-10VB-P



VINTAGE NICKEL

160mm CC	4004-1VTN-P
96mm CC	4130-1VTN-P
3in. CC	4001-1VTN-P
Knob	4007-1VTN-P

## Connections Product Data

CC	Product Type	Length	Width	Height/Projection	Hand Clearance	Diameter	Base	Tap/Screws (Qty)
160mm	Pull	6 7/8in.	9/16in.	1 1/4in.	2 9/32in.	-	3/8in.	8-32 x 1in. (2)
96mm	Pull	4 3/4in.	1/2in.	1 1/8in.	2 9/32in.	-	3/8in.	8-32 x 1in. (2)
3in.	Pull	3 1/2in.	1/2in.	1 1/8in.	2 7/32in.	-	3/8in.	8-32 x 1in. (2)
-	Knob	1 1/8in.	1 1/8in.	1 1/8in.	-	-	5/16in.	8-32 x 1in. (1)



Featuring the Designers' Group Ten Collection in Polished Nickel

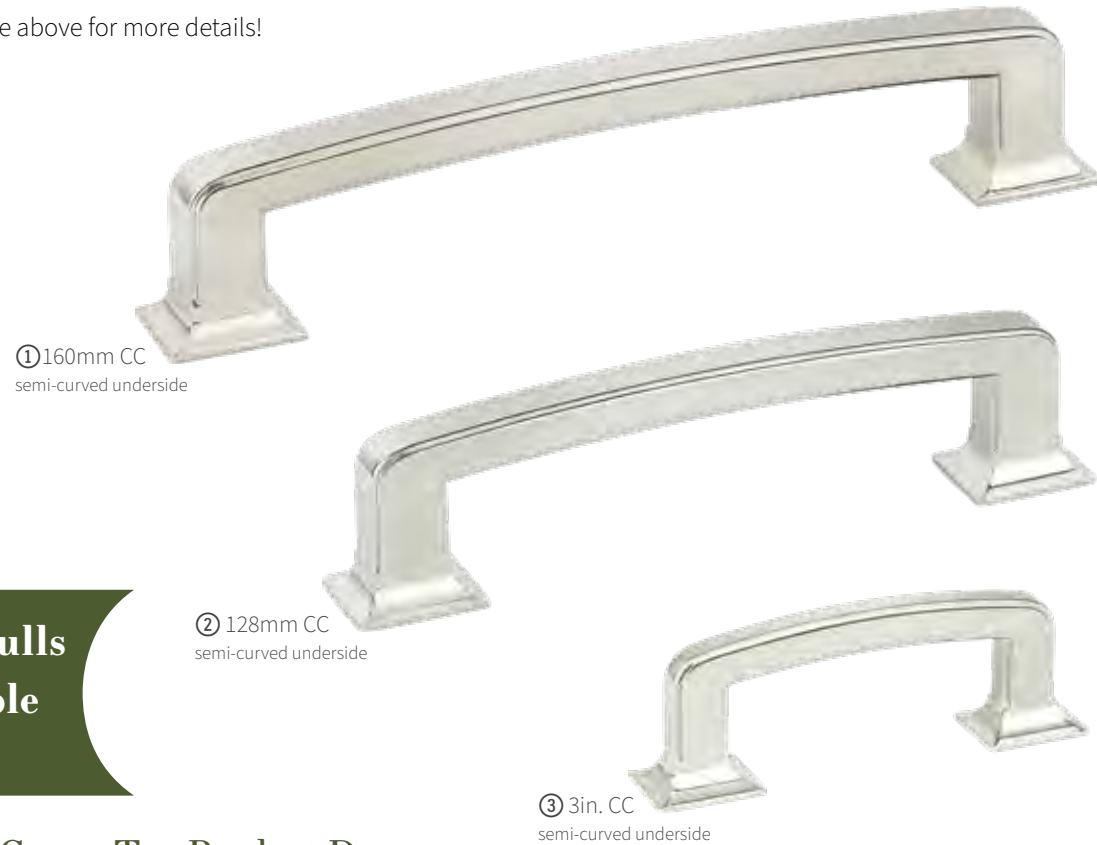


# DESIGNERS' GROUP TEN

## CLASSIC COMFORT - *Transitional Style*

Collection Only Available in Polished Nickel

Scan the QR Code above for more details!



① 160mm CC  
semi-curved underside

② 128mm CC  
semi-curved underside

③ 3in. CC  
semi-curved underside



④ \*6in. CC  
semi-curved underside

⑥ 96mm CC  
curved underside

⑤ 96mm CC  
semi-curved underside

⑧ Knob

⑨ Knob  
has tooth at bottom to help hold in position

⑦ 96mm CC  
curved underside

⑩ Knob

⑪ \*6in. CC  
curved underside

⑫ 4in. CC  
curved underside

⑭ Knob

⑮ Knob

⑬ 3in. CC  
curved underside

⑯ 3in. CC  
curved underside



### Appliance Pulls Also Available

18in. CC & 12in. CC

### Designers' Group Ten Product Data

	Part No.	CC	Product Type	Length	Width	Height/ Projection	Hand Clearance	Diameter	Base	Tap/Screws (Qty)
	4154-1014-P	*18in.	Appliance Pull	19 1/4in.	1 1/2in.	1 5/8in.	1 3/8in.	-	1 3/8in.	10-24 x 1in. (2)
	2036-1014-P	*12in.	Appliance Pull	13 3/8in.	3/4in.	1 13/16in.	1 23/64in.	-	1 1/2in.	10-24 x 1in. (2)
1	2046-1014-P	160mm	Pull	7 5/8in.	9/16in.	1 1/2in.	1 23/64in.	-	7/8in.	8-32 x 1in. (2)
2	+2041-1014-P	128mm	Pull	6 1/8in.	1/2in.	1 1/4in.	1 1/8in.	-	7/8in.	8-32 x 1in. (2)
3	4139-1014-P	3in.	Pull	3 15/16in.	3/8in.	1 3/8in.	9/16in.	-	1 3/8in.	8-32 x 1 3/4in. (2)
4	4141-1014-P	**6in.	Pull	7 3/8in.	1 1/8in.	1 11/16in.	1 5/32in.	-	1 1/2in.	8-32 x 1in. (2)
5	+4140-1014-P	96mm	Pull	4 13/16in.	3/8in.	1 3/8in.	9/16in.	-	7/8in.	8-32 x 1in. (2)
6	4153-1014-P	96mm	Pull	4 3/8in.	1/2in.	1 3/8in.	3/4in.	-	9/16in.	8-32 x 1in. (2)
7	4144-1014-P	96mm	Pull	5 1/4in.	5/8in.	1 5/8in.	23/32in.	-	7/8in.	8-32 x 1in. (2)
8	4145-1014-P	-	Knob	-	-	1 5/8in.	1 1/8in.	1 3/8in.	1in.	8-32 x 1in. (1)
9	4142-1014-P	-	Knob	1 3/8in.	1 1/8in.	1 5/8in.	3/4in.	-	1 3/8in.	8-32 x 1in. (1)
10	4143-1014-P	-	Knob	-	-	1 1/8in.	-	1 1/8in.	1 1/8in.	8-32 x 1in. (1)
11	4149-1014-P	**6in.	Pull	6 3/8in.	1 1/8in.	1 7/8in.	1 7/32in.	-	9/16in.	8-32 x 1in. (2)
12	4147-1014-P	4in.	Pull	4 3/8in.	1/2in.	1 1/4in.	5/16in.	-	3/8in.	8-32 x 1in. (2)
13	4148-1014-P	3in.	Pull	3 1/2in.	1/2in.	1 5/8in.	5/16in.	-	3/8in.	8-32 x 1in. (2)
14	4150-1014-P	-	Knob	-	-	1 5/8in.	-	1 1/4in.	1 1/8in.	8-32 x 1in. (1)
15	4152-1014-P	-	Knob	-	-	1 5/8in.	-	1 3/8in.	1 1/8in.	8-32 x 1in. (1)
16	4146-1014-P	3in.	Cup Pull	4 11/16in.	1 7/8in.	1 1/8in.	5/16in.	-	-	8-32 x 1in. (2)

\*Product not shown, please visit [www.BerensonHardware.com](http://www.BerensonHardware.com) to view images and details.

\*\*The 6in. CC pulls feature a wider width that adds dimension to kitchen and bath designs

+2 Additional 8-32 x 1 3/4in. break-off screws provided.

Some parts in this collection can be found in additional finishes from our other collections.

①-⑤, ⑨ & Appliance Pulls • Hearthstone - p. 85

⑧ • Andante - p. 78

⑪-⑭ • Forté - p. 32

⑦, ⑩ • Euro Moderno - p. 31

⑯ • American Classics - p. 75



# DIERDRA

## CLASSIC COMFORT - *Transitional Style*

Collection Featured in Oil Rubbed Bronze

Scan the QR Code above for more details!



### Dierdra Available Finishes, Sizes & Part Numbers

The pulls of this collection feature a curved underside on the handle.



BRUSHED NICKEL

224mm CC	9564-1BPN-P
160mm CC	9562-1BPN-P
96mm CC	4056-1BPN-P
Knob	4061-1BPN-P



OIL RUBBED BRONZE

224mm CC	9566-1ORB-P
160mm CC	9565-1ORB-P
96mm CC	4060-1ORB-P
Knob	4071-1ORB-P



POLISHED NICKEL

224mm CC	9568-1014-P
160mm CC	9567-1014-P
96mm CC	4107-1014-P
Knob	4110-1014-P



VERONA BRONZE

224mm CC	9805-10VB-P
160mm CC	9569-10VB-P
96mm CC	4057-10VB-P
Knob	4062-10VB-P



VINTAGE NICKEL

224mm CC	9808-1VTN-P
160mm CC	9807-1VTN-P
96mm CC	9806-1VTN-P
Knob	9809-1VTN-P



WEATHERED NICKEL

224mm CC	9811-10WN-P
160mm CC	9810-10WN-P
96mm CC	4058-10WN-P
Knob	4065-10WN-P

### Dierdra Product Data

CC	Product Type	Length	Width	Height/Projection	Hand Clearance	Diameter	Base	Tap/Screws (Qty)
224mm	Pull	9 1/2in.	5/8in.	1 3/8in.	1 1/4in.	-	1/2in.	8-32 x 1in. (2)
160mm	Pull	6 1 5/16in.	5/8in.	1 1/2in.	1 5/16in.	-	1/2in.	8-32 x 1in. (2)
96mm	Pull	4 1/2in.	5/8in.	1 5/8in.	1 1/4in.	-	3/8in.	8-32 x 1in. (2)
-	Knob	1 7/16in.	1in.	1 3/8in.	5/8in.	-	1/4in.	8-32 x 1in. (1)



Featuring the Domestic Bliss Collection in Modern Brushed Gold  
Design and photos by Jennifer Hutton at  
Artisan Kitchens and Baths,  
@JenniferHutton\_Pro



# DOMESTIC BLISS

## CLASSIC COMFORT - Transitional Style

Collection Featured in Modern Brushed Gold

Scan the QR Code above for more details!



## Domestic Bliss Available Finishes, Sizes & Part Numbers

The pulls of this collection feature a curved underside on the handle.



BRUSHED NICKEL

320mm CC	2356-1BPN-P
224mm CC	2352-1BPN-P
160mm CC	2348-1BPN-P
128mm CC	2343-1BPN-P
96mm CC	2339-1BPN-P
Knob	2360-1BPN-P



MATTE BLACK

320mm CC	2410-1055-P
224mm CC	2409-1055-P
160mm CC	2402-1055-P
128mm CC	2401-1055-P
96mm CC	2400-1055-P
Knob	2399-1055-P



MODERN BRUSHED GOLD

320mm CC	2359-1MDB-P
224mm CC	2355-1MDB-P
160mm CC	2351-1MDB-P
128mm CC	2347-1MDB-P
96mm CC	2342-1MDB-P
Knob	2363-1MDB-P



POLISHED NICKEL

320mm CC	2358-1014-P
224mm CC	2354-1014-P
160mm CC	2350-1014-P
128mm CC	2346-1014-P
96mm CC	2341-1014-P
Knob	2362-1014-P



SLATE

320mm CC	2408-1SLT-P
224mm CC	2407-1SLT-P
160mm CC	2406-1SLT-P
128mm CC	2405-1SLT-P
96mm CC	2404-1SLT-P
Knob	2403-1SLT-P



VERONA BRONZE

320mm CC	2357-10VB-P
224mm CC	2353-10VB-P
160mm CC	2349-10VB-P
128mm CC	2344-10VB-P
96mm CC	2340-10VB-P
Knob	2361-10VB-P

## Domestic Bliss Product Data

CC	Product Type	Length	Width	Height/Projection	Hand Clearance	Diameter	Base	Tap/Screws (Qty)
*320mm	Pull	13 1/2 in.	1 in.	1 1/2 in.	1 1/16 in.	-	1 5/16 in.	8-32 x 1 in. (2)
224mm	Pull	9 3/4 in.	1 1/4 in.	1 1/2 in.	1 1/16 in.	-	1 5/16 in.	8-32 x 1 in. (2)
160mm	Pull	7 1/8 in.	3/4 in.	1 7/16 in.	1 1/16 in.	-	7/8 in.	8-32 x 1 in. (2)
128mm	Pull	5 3/4 in.	5/8 in.	1 3/8 in.	1 1/16 in.	-	3/4 in.	8-32 x 1 in. (2)
96mm	Pull	4 1/2 in.	5/8 in.	1 3/8 in.	1 1/16 in.	-	3/4 in.	8-32 x 1 in. (2)
-	Knob	-	-	1 1/8 in.	-	1 3/16 in.	1 1/16 in.	8-32 x 1 in. (1)

\*Product not shown, please visit [www.BerensonHardware.com](http://www.BerensonHardware.com) to view images and details.



# EURO MODERNO

## CLASSIC COMFORT - Transitional Style

Collection Featured in Brushed Nickel

Scan the QR Code above for more details!



### Euro Moderno Available Finishes, Sizes & Part Numbers

The pulls of this collection feature a curved underside on the handle.

BRUSHED ANTIQUE BRASS		BRUSHED ANTIQUE COPPER		BRUSHED BLACK NICKEL		BRUSHED NICKEL	
96mm CC	9721-1BAB-P	96mm CC	9719-1BAC-P	96mm CC	9720-1BBN-P	96mm CC	9718-1BPN-P
64mm CC	9713-1BAB-P	64mm CC	9711-1BAC-P	64mm CC	9712-1BBN-P	64mm CC	9710-1BPN-P
Knob	9724-1BAB-P	Knob	9722-1BAC-P	Knob	9723-1BBN-P	Knob	9913-1BPN-P

### Euro Moderno Product Data

CC	Product Type	Length	Width	Height/Projection	Hand Clearance	Diameter	Base	Tap/Screws (Qty)
96mm	Pull	5 1/4in.	5/8in.	1 5/16in.	2 3/32in.	-	7/8in.	8-32 x 1in. (2)
64mm	Cup Pull	3 3/8in.	1 1/8in.	1 5/16in.	2 7/32in.	-	-	8-32 x 1in. (2)
-	Knob	-	-	1 1/16in.	3 5/16in.	1 1/8in.	5/8in.	8-32 x 1in. (1)

# FORTÉ

## CLASSIC COMFORT - Transitional Style

Collection Featured in Weathered Nickel

Scan the QR Code above for more details!



Appliance Pull  
Also Available

18in. CC

### Forté Available Finishes, Sizes & Part Numbers

The pulls of this collection feature a curved underside on the handle.

+2 Additional 8-32 x 1 3/4in. break-off screws provided for pull. 1 Additional 8-32 x 1 3/4in. break-off screw provided for knob.

BRUSHED NICKEL		OIL RUBBED BRONZE		VERONA BRONZE		WEATHERED NICKEL	
18in. CC	8297-1BPN-P	18in. CC	8299-1ORB-P	18in. CC	8298-1VB-P	18in. CC	8300-1WN-P
6in. CC	8267-1BPN-P	6in. CC	8269-1ORB-P	6in. CC	8268-1VB-P	6in. CC	8270-1WN-P
4in. CC	8273-1BPN-P	4in. CC	Not Available	4in. CC	+8274-1VB-P	4in. CC	8276-1WN-P
① Knob	8279-1BPN-P	① Knob	8281-1ORB-P	① Knob	8280-1VB-P	① Knob	8282-1WN-P
② Knob	8285-1BPN-P	② Knob	8287-1ORB-P	② Knob	+8286-1VB-P	② Knob	8288-1WN-P

### Forté Product Data

CC	Product Type	Length	Width	Height/Projection	Hand Clearance	Diameter	Base	Tap/Screws (Qty)
*18in.	Appliance Pull	19in.	1 1/8in.	2 1/2in.	1 3/8in.	-	1in.	10-24 x 1in. (2)
**6in.	Pull	6 5/8in.	1 1/16in.	1 7/8in.	1 7/32in.	-	5/8in.	8-32 x 1in. (2)
4in.	Pull	4 3/8in.	1/2in.	1 1/4in.	5 5/16in.	-	3/8in.	+8-32 x 1in. (2)
-	① Knob	-	-	1 3/8in.	5 5/16in.	1 1 1/16in.	3/8in.	8-32 x 1in. (1)
-	② Knob	-	-	1 1/16in.	-	1 1/8in.	1 1/16in.	+8-32 x 1in. (1)

\*Product not shown, please visit [www.BerensonHardware.com](http://www.BerensonHardware.com) to view images and details.

\*\*The 6in. CC pull features a wider width that adds dimension to kitchen and bath designs

+2 Additional 8-32 x 1 3/4in. break-off screws provided.



# MEADOW

## CLASSIC COMFORT - Transitional Style

Collection Featured in Verona Bronze

Scan the QR Code above for more details!



Appliance Pull  
Also Available

448mm CC

### Meadow Product Data

CC	Product Type	Length	Width	Height/Projection	Hand Clearance	Diameter	Base	Tap/Screws (Qty)
*448mm	Appliance Pull	19 1/4in.	2 5/32in.	1 1/4in.	3 1/2in.	-	1 7/32in.	10-24 x 1in. (2)
*320mm	Pull	14 3/16in.	1 1/16in.	1 3/8in.	5 9/16in.	-	1/2in.	8-32 x 1in. (2)
256mm	Pull	11 11/16in.	1 1/16in.	1 3/8in.	5 9/16in.	-	1/2in.	8-32 x 1in. (2)
160mm	Pull	7 7/8in.	1 1/16in.	1 3/8in.	5 9/16in.	-	1/2in.	8-32 x 1in. (2)
128mm	Pull	6 5/8in.	1 1/16in.	1 3/8in.	5 9/16in.	-	1/2in.	8-32 x 1in. (2)
96mm	Pull	5 7/16in.	1 1/16in.	1 3/8in.	5 9/16in.	-	1/2in.	8-32 x 1in. (2)
-	Knob	1 3/4in.	1 1/16in.	1 1/4in.	2 7/32in.	-	1/2in.	8-32 x 1in. (1)

\*Product not shown, please visit [www.BerensonHardware.com](http://www.BerensonHardware.com) to view images and details.

### Meadow Available Finishes, Sizes & Part Numbers

The pulls of this collection feature a curved underside on the handle.



BRUSHED NICKEL

448mm CC	2302-4BPN-P
320mm CC	2308-4BPN-P
256mm CC	2306-4BPN-P
160mm CC	2304-4BPN-P
128mm CC	2099-4BPN-P
96mm CC	2097-4BPN-P
Knob	2310-1BPN-P



GRAPHITE

448mm CC	2285-4GPH-P
320mm CC	2284-4GPH-P
256mm CC	2283-4GPH-P
160mm CC	2282-4GPH-P
128mm CC	2281-4GPH-P
96mm CC	2280-4GPH-P
Knob	2286-4GPH-P



MATTE BLACK

448mm CC	2292-4055-P
320mm CC	2291-4055-P
256mm CC	2290-4055-P
160mm CC	2289-4055-P
128mm CC	2288-4055-P
96mm CC	2287-4055-P
Knob	2293-4055-P



POLISHED CHROME

448mm CC	2299-4026-P
320mm CC	2298-4026-P
256mm CC	2297-4026-P
160mm CC	2296-4026-P
128mm CC	2295-4026-P
96mm CC	2294-4026-P
Knob	2300-4026-P



SATIN GOLD

448mm CC	2278-40SG-P
320mm CC	2277-40SG-P
256mm CC	2276-40SG-P
160mm CC	2275-40SG-P
128mm CC	2274-40SG-P
96mm CC	2273-40SG-P
Knob	2279-40SG-P



VERONA BRONZE

448mm CC	2301-40VB-P
320mm CC	2309-40VB-P
256mm CC	2307-40VB-P
160mm CC	2305-40VB-P
128mm CC	2303-40VB-P
96mm CC	2098-40VB-P
Knob	2311-10VB-P



## TRANSITIONAL

A modern take on a classic design, these pulls add a *familiar visual element* to cabinets.

## CLASSIC COMFORT



# OASIS

## CLASSIC COMFORT - *Transitional Style*

Collection Featured in Brushed Tin

Scan the QR Code above for more details!



### Oasis Available Finishes, Sizes & Part Numbers

The pulls of this collection feature a flat underside on the handle.

+2 Additional 8-32 x 1 3/4in. break-off screws provided for pull. 1 Additional 8-32 x 1 3/4in. break-off screw provided for knob.



BRUSHED NICKEL

160mm CC	9252-1BPN-P
128mm CC	9249-1BPN-P
96mm CC	9246-1BPN-P
Knob	9255-1BPN-P



BRUSHED TIN

160mm CC	+9253-10BT-P
128mm CC	9250-10BT-P
96mm CC	9247-10BT-P
Knob	+9256-10BT-P



OIL RUBBED BRONZE

160mm CC	9251-1ORB-P
128mm CC	9248-1ORB-P
96mm CC	9245-1ORB-P
Knob	9254-1ORB-P

### Oasis Product Data

CC	Product Type	Length	Width	Height/Projection	Hand Clearance	Diameter	Base	Tap/Screws (Qty)
160mm	Pull	7 5/16in.	1 3/16in.	1 1/16in.	6 3/4in.	-	1 1/16in.	8-32 x 1in. (2)
128mm	Pull	6 1/16in.	1 3/16in.	1 1/16in.	6 3/4in.	-	1 1/16in.	8-32 x 1in. (2)
96mm	Pull	4 7/16in.	1 3/16in.	1 1/16in.	6 3/4in.	-	1 1/16in.	8-32 x 1in. (2)
-	Knob	-	-	1 1/16in.	-	1 1/16in.	5/16in.	8-32 x 1in. (1)



# RIVET REBEL

## CLASSIC COMFORT - Transitional Style

Collection Featured in Brushed Nickel and Matte Black

Scan the QR Code above for more details!

NEW



Appliance Pull Also Available

12in. CC

### Rivet Rebel Product Data

CC	Product Type	Length	Width	Height/Projection	Hand Clearance	Diameter	Base	Tap/Screws (Qty)
*12in.	Appliance Pull	14 3/16in.	2 3/32in.	1 7/16in.	1 3/16in.	-	1 5/32in.	10-24 x 1in. (2)
224mm	Pull	11 3/16in.	2 3/32in.	1 7/16in.	1 3/16in.	-	1 5/32in.	8-32 x 1in. (2)
160mm	Pull	8 2 1/32in.	2 3/32in.	1 7/16in.	1 3/16in.	-	1 5/32in.	8-32 x 1in. (2)
128mm	Pull	7 1 3/32in.	2 3/32in.	1 7/16in.	1 3/16in.	-	1 5/32in.	8-32 x 1in. (2)
96mm	Pull	6 5/32in.	2 3/32in.	1 7/16in.	1 3/16in.	-	1 5/32in.	8-32 x 1in. (2)
-	Knob	2in.	2 3/32in.	1 7/16in.	1 3/16in.	-	1 5/32in.	8-32 x 1in. (1)

\*Product not shown, please visit [www.BerensonHardware.com](http://www.BerensonHardware.com) to view images and details.

### Rivet Rebel Available Finishes, Sizes & Part Numbers

The pulls of this collection feature a flat underside on the handle.



#### BRUSHED NICKEL

12in. CC	5083-4BPN-P
224mm CC	5082-4BPN-P
160mm CC	5081-4BPN-P
128mm CC	5080-4BPN-P
96mm CC	5079-4BPN-P
Knob	5078-4BPN-P



#### BRUSHED NICKEL AND MATTE BLACK

12in. CC	5125-4BPN55-P
224mm CC	5124-4BPN55-P
160mm CC	5123-4BPN55-P
128mm CC	5122-4BPN55-P
96mm CC	5121-4BPN55-P
Knob	5120-4BPN55-P



#### MATTE BLACK

12in. CC	5095-4055-P
224mm CC	5094-4055-P
160mm CC	5093-4055-P
128mm CC	5092-4055-P
96mm CC	5091-4055-P
Knob	5090-4055-P



#### MATTE BLACK AND BRUSHED NICKEL

12in. CC	5119-455BPN-P
224mm CC	5118-455BPN-P
160mm CC	5117-455BPN-P
128mm CC	5116-455BPN-P
96mm CC	5115-455BPN-P
Knob	5114-455BPN-P



#### MATTE BLACK AND MODERN BRUSHED GOLD

12in. CC	5113-455MDB-P
224mm CC	5112-455MDB-P
160mm CC	5111-455MDB-P
128mm CC	5110-455MDB-P
96mm CC	5109-455MDB-P
Knob	5108-455MDB-P



#### MODERN BRUSHED GOLD

12in. CC	5107-4MDB-P
224mm CC	5106-4MDB-P
160mm CC	5105-4MDB-P
128mm CC	5104-4MDB-P
96mm CC	5103-4MDB-P
Knob	5102-4MDB-P



#### POLISHED CHROME

12in. CC	5089-4026-P
224mm CC	5088-4026-P
160mm CC	5087-4026-P
128mm CC	5086-4026-P
96mm CC	5085-4026-P
Knob	5084-4026-P



#### SLATE

12in. CC	5101-4SLT-P
224mm CC	5100-4SLT-P
160mm CC	5099-4SLT-P
128mm CC	5098-4SLT-P
96mm CC	5097-4SLT-P
Knob	5096-4SLT-P



#### SLATE AND MATTE BLACK

12in. CC	5131-4SLT55-P
224mm CC	5130-4SLT55-P
160mm CC	5129-4SLT55-P
128mm CC	5128-4SLT55-P
96mm CC	5127-4SLT55-P
Knob	5126-4SLT55-P

Featuring the Subtle Surge Collection in Brushed Nickel  
Design and photos by Jennifer Hutton at  
Artisan Kitchens and Baths,  
@JenniferHutton\_Pro





# SUBTLE SURGE

## CLASSIC COMFORT - Transitional Style

Collection Featured in Matte Black

Scan the QR Code above for more details!



### Appliance Pulls Also Available

18in. CC & 12in. CC

### Subtle Surge Product Data

CC	Product Type	Length	Width	Height/Projection	Hand Clearance	Diameter	Base	Tap/Screws (Qty)
*18in.	Appliance Pull	18 7/16in.	2 5/32in.	2 3/32in.	1 3/8in.	-	1 1/2in.	10-24 x 1in. (2)
*12in.	Appliance Pull	12 5/16in.	1 1/16in.	1 5/16in.	1 1/16in.	-	5/8in.	10-24 x 1in. (2)
224mm	Pull	9 3/16in.	1/2in.	1 3/16in.	6 3/4in.	-	7/16in.	8-32 x 1in. (2)
160mm	Pull	6 1 5/16in.	1 5/32in.	1 3/16in.	6 3/4in.	-	1 3/32in.	8-32 x 1in. (2)
128mm	Pull	5 5/16in.	7/16in.	1 3/16in.	6 3/4in.	-	3/8in.	8-32 x 1in. (2)
96mm	Pull	4 3/16in.	7/16in.	1 5/16in.	1 5/16in.	-	3/8in.	8-32 x 1in. (2)
-	Knob	1 1/4in.	3/4in.	1 1/4in.	2 9/32in.	-	1/2in.	8-32 x 1in. (1)

\*Product not shown, please visit [www.BerensonHardware.com](http://www.BerensonHardware.com) to view images and details.



### Subtle Surge Available Finishes, Sizes & Part Numbers

The pulls of this collection feature a flat underside on the handle.



#### BRUSHED NICKEL

18in. CC	1115-1BPN-P
12in. CC	1266-1BPN-P
224mm CC	1260-1BPN-P
160mm CC	1254-1BPN-P
128mm CC	1248-1BPN-P
96mm CC	1242-1BPN-P
Knob	1236-1BPN-P



#### MATTE BLACK

18in. CC	1119-1055-P
12in. CC	1269-1055-P
224mm CC	1263-1055-P
160mm CC	1257-1055-P
128mm CC	1251-1055-P
96mm CC	1245-1055-P
Knob	1239-1055-P



#### MODERN BRUSHED GOLD

18in. CC	1114-1MDB-P
12in. CC	1270-1MDB-P
224mm CC	1264-1MDB-P
160mm CC	1258-1MDB-P
128mm CC	1252-1MDB-P
96mm CC	1246-1MDB-P
Knob	1240-1MDB-P



#### POLISHED NICKEL

18in. CC	1116-1014-P
12in. CC	1268-1014-P
224mm CC	1262-1014-P
160mm CC	1256-1014-P
128mm CC	1250-1014-P
96mm CC	1244-1014-P
Knob	1238-1014-P



#### VERONA BRONZE

18in. CC	1117-10VB-P
12in. CC	1267-10VB-P
224mm CC	1261-10VB-P
160mm CC	1255-10VB-P
128mm CC	1249-10VB-P
96mm CC	1243-10VB-P
Knob	1237-10VB-P



#### VINTAGE NICKEL

18in. CC	1118-1VTN-P
12in. CC	1271-1VTN-P
224mm CC	1265-1VTN-P
160mm CC	1259-1VTN-P
128mm CC	1253-1VTN-P
96mm CC	1247-1VTN-P
Knob	1241-1VTN-P



# TEMPO

## CLASSIC COMFORT - Transitional Style

Collection Featured in Brushed Nickel

Scan the QR Code above for more details!



### Tempo Longer Lengths on Pg.46

Available in Brushed Nickel

### Tempo Product Data

CC	Product Type	Length	Width	Height/Projection	Hand Clearance	Diameter	Base	Tap/Screws (Qty)
*320mm	Pull	15in.	½in.	1 ¼in.	2 ½in.	-	¾in.	8-32 x 1in. (2)
256mm	Pull	12 7/16in.	½in.	1 ¼in.	2 ½in.	-	¾in.	8-32 x 1in. (2)
224mm	Pull	11 ¾in.	½in.	1 ¼in.	2 ½in.	-	¾in.	8-32 x 1in. (2)
192mm	Pull	9 1 5/16in.	½in.	1 ¼in.	2 ½in.	-	¾in.	8-32 x 1in. (2)
160mm	Pull	8 1 1/8in.	½in.	1 ¼in.	2 ½in.	-	¾in.	8-32 x 1in. (2)
128mm	Pull	7 ¾in.	½in.	1 ¼in.	2 ½in.	-	¾in.	8-32 x 1in. (2)
96mm	Pull	6 ½in.	½in.	1 ¼in.	2 ½in.	-	¾in.	8-32 x 1in. (2)
3in.	Pull	5 ¾in.	½in.	1 ¼in.	2 ½in.	-	¾in.	8-32 x 1in. (2)
-	Knob	2in.	½in.	1 ¼in.	2 ½in.	-	¾in.	8-32 x 1in. (1)

\*Product not shown, please visit [www.BerensonHardware.com](http://www.BerensonHardware.com) to view images and details.



### Tempo Available Finishes, Sizes & Part Numbers

The pulls of this collection feature a curved underside on the handle.



BLACK

320mm CC	0838-2055-P
256mm CC	0836-2055-P
224mm CC	0835-2055-P
192mm CC	0834-2055-P
160mm CC	0833-2055-P
128mm CC	0832-2055-P
96mm CC	0831-2055-P
3in. CC	0830-2055-P
Knob	0839-2055-P



BRUSHED NICKEL

320mm CC	0810-2BPN-P
256mm CC	0808-2BPN-P
224mm CC	1127-2BPN-P
192mm CC	0806-2BPN-P
160mm CC	1126-2BPN-P
128mm CC	0804-2BPN-P
96mm CC	0802-2BPN-P
3in. CC	0800-2BPN-P
Knob	2020-2BPN-P



MODERN BRUSHED GOLD

320mm CC	0828-2MDB-P
256mm CC	0826-2MDB-P
224mm CC	0825-2MDB-P
192mm CC	0824-2MDB-P
160mm CC	0823-2MDB-P
128mm CC	0822-2MDB-P
96mm CC	0821-2MDB-P
3in. CC	0820-2MDB-P
Knob	0829-2MDB-P



POLISHED CHROME

320mm CC	2006-2026-P
256mm CC	2017-2026-P
224mm CC	2016-2026-P
192mm CC	2015-2026-P
160mm CC	2028-2026-P
128mm CC	2014-2026-P
96mm CC	2013-2026-P
3in. CC	2012-2026-P
Knob	2019-2026-P



VERONA BRONZE

320mm CC	0811-20VB-P
256mm CC	0809-20VB-P
224mm CC	0813-20VB-P
192mm CC	0807-20VB-P
160mm CC	0812-20VB-P
128mm CC	0805-20VB-P
96mm CC	0803-20VB-P
3in. CC	0801-20VB-P
Knob	2018-20VB-P

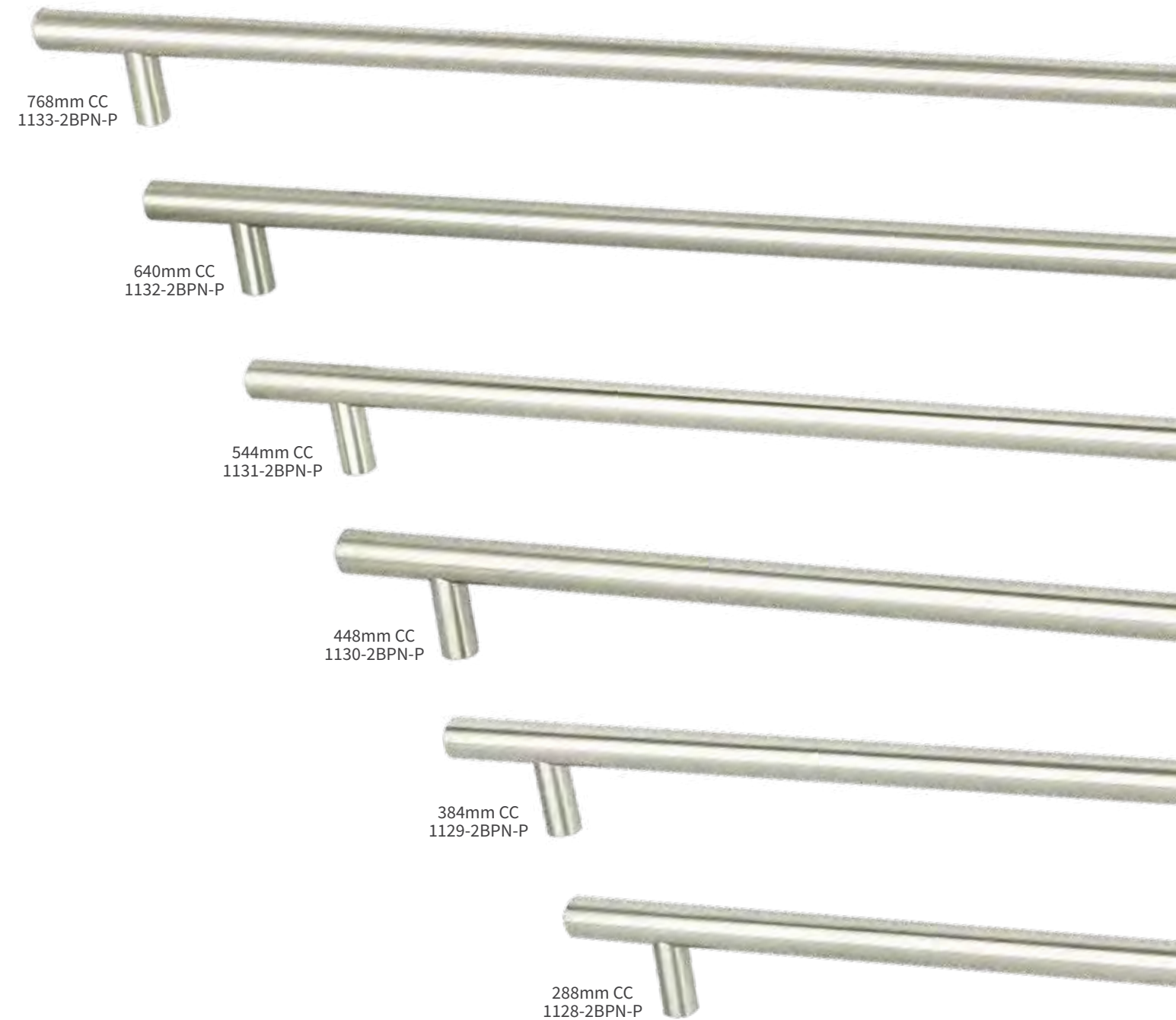


TRANSITIONAL

Simple, *versatile* designs that complement transitional style.

Tempo Longer Lengths • Only Available in Brushed Nickel

The pulls of this collection feature a curved underside on the handle.



Tempo Product Data

CC	Product Type	Length	Width	Height/Projection	Hand Clearance	Diameter	Base	Tap/Screws (Qty)
768mm	Pull	32 5/8in.	1/2in.	1 1/4in.	2 5/32in.	-	3/8in.	8-32 x 1in. (2)
640mm	Pull	27 1/4in.	1/2in.	1 1/4in.	2 5/32in.	-	3/8in.	8-32 x 1in. (2)
544mm	Pull	23 3/4in.	1/2in.	1 1/4in.	2 5/32in.	-	3/8in.	8-32 x 1in. (2)
448mm	Pull	20in.	1/2in.	1 1/4in.	2 5/32in.	-	3/8in.	8-32 x 1in. (2)
384mm	Pull	17 1/2in.	1/2in.	1 1/4in.	2 5/32in.	-	3/8in.	8-32 x 1in. (2)
288mm	Pull	13 1/4in.	1/2in.	1 1/4in.	2 5/32in.	-	3/8in.	8-32 x 1in. (2)

CC = center to center | images of parts are not shown at 100% scale





# UPTOWN APPEAL

## CONTEMPORARY STYLE

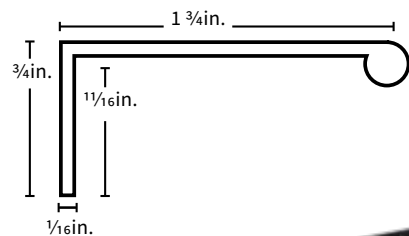
Favor clean lines & subtle flair in minimalist hardware designs for a sleek approach to home design.



Featuring the Metro Collection in Slate

## UPTOWN APPEAL - Contemporary Style

Collection Featured in Satin Black  
Scan the QR Code above for more details!



**Aluminum Edge Pull Also Available (1051-4ALU-B)\***

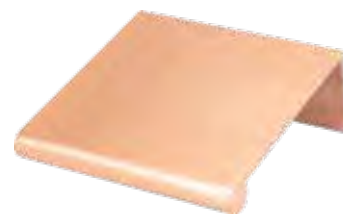


\*Pull measures 96 7/16 in. long and is made for you to cut down to your required size.

### Bravo Product Data

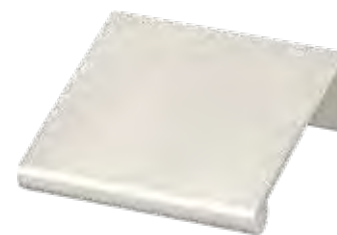
CC	Product Type	Length	Width	Height/Projection	Hand Clearance	Diameter	Base	Screws (Qty)
169mm	Edge Pull	9 1/4 in.	3/4 in.	1 3/4 in.	-	-	1 1/2 in.	3/8 in. Wood (2)
112mm	Edge Pull	6 in.	3/4 in.	1 3/4 in.	-	-	1 1/2 in.	3/8 in. Wood (2)
56mm	Edge Pull	3 in.	3/4 in.	1 3/4 in.	-	-	1 1/2 in.	3/8 in. Wood (2)
32mm	Edge Pull	1 3/4 in.	3/4 in.	1 3/4 in.	-	-	1 1/2 in.	3/8 in. Wood (2)

### Bravo Available Finishes, Sizes & Part Numbers



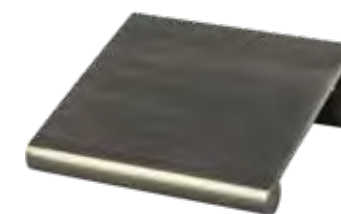
BRUSHED COPPER

169mm CC	1049-40BC-P
112mm CC	1048-40BC-P
56mm CC	1047-40BC-P
32mm CC	1046-40BC-P



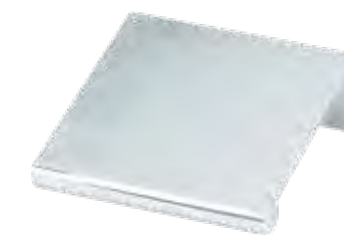
BRUSHED NICKEL

169mm CC	1065-4BPN-P
112mm CC	1061-4BPN-P
56mm CC	1057-4BPN-P
32mm CC	1052-4BPN-P



GRAPHITE

169mm CC	1076-4GPH-P
112mm CC	1075-4GPH-P
56mm CC	1074-4GPH-P
32mm CC	1073-4GPH-P



POLISHED CHROME

169mm CC	1066-4026-P
112mm CC	1062-4026-P
56mm CC	1058-4026-P
32mm CC	1053-4026-P



SATIN BLACK

169mm CC	1068-4055-P
112mm CC	1064-4055-P
56mm CC	1060-4055-P
32mm CC	1056-4055-P



SATIN GOLD

169mm CC	1072-40SG-P
112mm CC	1071-40SG-P
56mm CC	1070-40SG-P
32mm CC	1069-40SG-P



VERONA BRONZE

169mm CC	1067-40VB-P
112mm CC	1063-40VB-P
56mm CC	1059-40VB-P
32mm CC	1055-40VB-P



Featuring the Elevate Collection in Brushed Nickel

## UPTOWN APPEAL - Contemporary Style

Collection Featured in Verona Bronze

Scan the QR Code above for more details!



**Appliance Pulls  
Also Available**

18in. CC & 320mm CC

### Elevate Product Data

CC	Product Type	Length	Width	Height/ Projection	Hand Clearance	Diameter	Base	Tap/Screws (Qty)
*18in.	Appliance Pull	19 5/16in.	1 3/16in.	2in.	1 3/16in.	-	1 3/16in.	10-24 x 1in. (2)
*320mm	Appliance Pull	13 1/8in.	3/4in.	1 1/8in.	5/16in.	-	5/16in.	10-24 x 1in. (2)
256mm	Pull	10 5/8in.	3/4in.	1 1/8in.	5/16in.	-	5/16in.	8-32 x 1in. (2)
160mm	Pull	6 13/16in.	3/4in.	1 1/8in.	5/16in.	-	5/16in.	8-32 x 1in. (2)
128mm	Pull	5 5/8in.	3/4in.	1 1/8in.	5/16in.	-	5/16in.	8-32 x 1in. (2)
96mm	Pull	4 5/8in.	3/4in.	1 1/8in.	5/16in.	-	5/16in.	8-32 x 1in. (2)
-	① Knob	1 5/8in.	1 5/8in.	1 1/8in.	3/8in.	-	1 5/8in.	8-32 x 1in. (1)
-	② Knob	1 3/8in.	1 3/8in.	7/8in.	1 9/32in.	-	1 9/32in.	8-32 x 1in. (1)

\*Product not shown, please visit [www.BerensonHardware.com](http://www.BerensonHardware.com) to view images and details.

### Elevate Available Finishes, Sizes & Part Numbers

The pulls of this collection feature a curved underside on the handle.



BRUSHED NICKEL

18in. CC	2101-4BPN-P
320mm CC	2093-4BPN-P
256mm CC	2091-4BPN-P
160mm CC	2089-4BPN-P
128mm CC	2087-4BPN-P
96mm CC	2085-4BPN-P
① Knob	2095-4BPN-P
② Knob	2172-1BPN-P



GRAPHITE

18in. CC	2114-4GPH-P
320mm CC	2113-4GPH-P
256mm CC	2112-4GPH-P
160mm CC	2111-4GPH-P
128mm CC	2110-4GPH-P
96mm CC	2109-4GPH-P
① Knob	2115-4GPH-P
② Knob	2174-1GPH-P



MATTE BLACK

18in. CC	2121-4055-P
320mm CC	2120-4055-P
256mm CC	2119-4055-P
160mm CC	2118-4055-P
128mm CC	2117-4055-P
96mm CC	2116-4055-P
① Knob	2122-4055-P
② Knob	2175-1055-P



POLISHED CHROME

18in. CC	2128-4026-P
320mm CC	2127-4026-P
256mm CC	2126-4026-P
160mm CC	2125-4026-P
128mm CC	2124-4026-P
96mm CC	2123-4026-P
① Knob	2129-4026-P
② Knob	2176-1026-P



SATIN GOLD

18in. CC	2107-40SG-P
320mm CC	2106-40SG-P
256mm CC	2105-40SG-P
160mm CC	2104-40SG-P
128mm CC	2103-40SG-P
96mm CC	2102-40SG-P
① Knob	2108-40SG-P
② Knob	2173-10SG-P



VERONA BRONZE

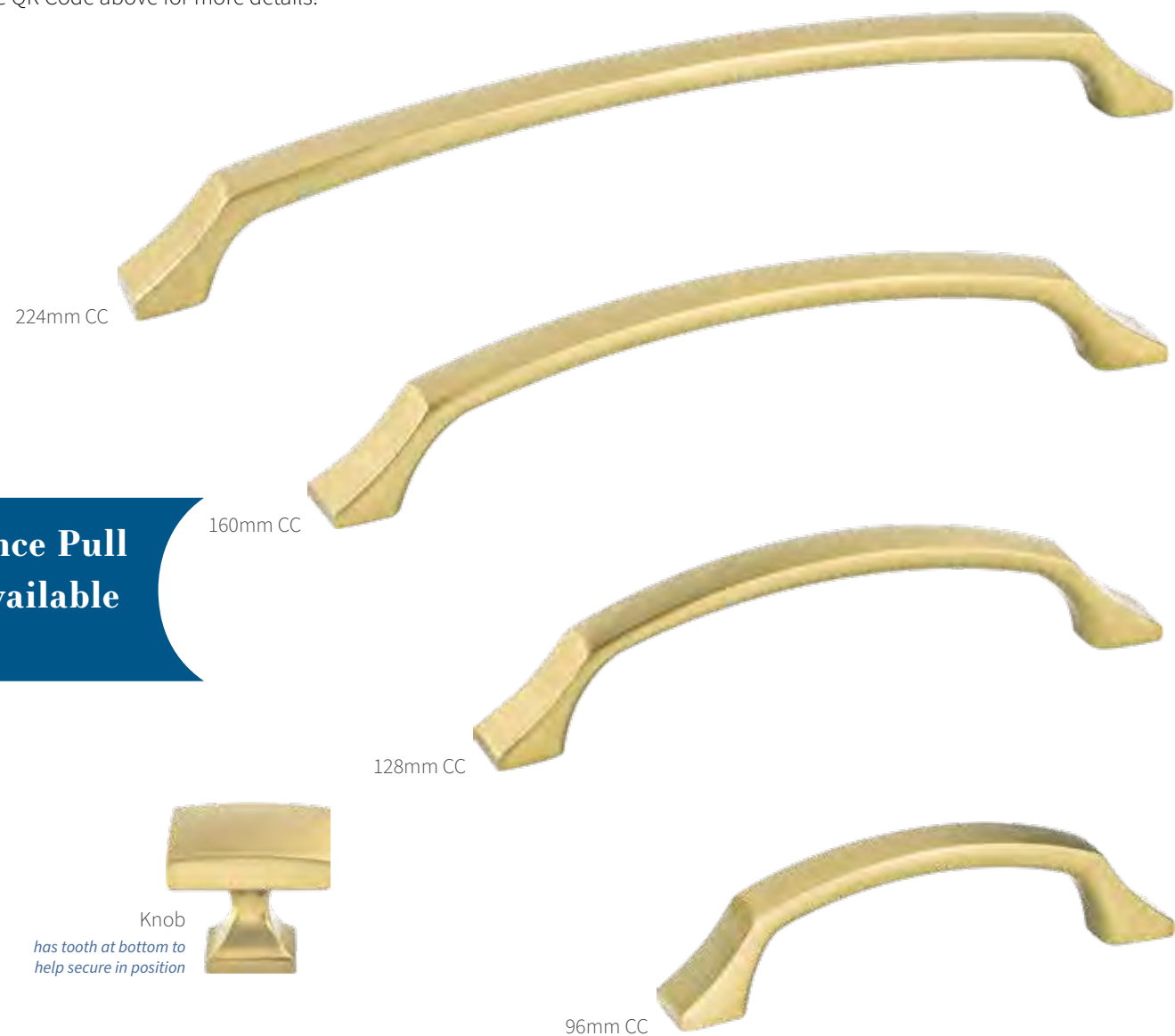
18in. CC	2100-40VB-P
320mm CC	2094-40VB-P
256mm CC	2092-40VB-P
160mm CC	2090-40VB-P
128mm CC	2088-40VB-P
96mm CC	2086-40VB-P
① Knob	2096-40VB-P
② Knob	2177-10VB-P

# EPOCH EDGE

## UPTOWN APPEAL - Contemporary Style

Collection Featured in Modern Brushed Gold

Scan the QR Code above for more details!



Appliance Pull  
Also Available

12in. CC

### Epoch Edge Product Data

CC	Product Type	Length	Width	Height/Projection	Hand Clearance	Diameter	Base	Tap/Screws (Qty)
*12in.	Appliance Pull	12 7/8in.	7/8in.	1 1/16in.	1 7/32in.	-	1in.	10-24 x 1in. (2)
224mm	Pull	9 1/2in.	1 1/16in.	1 3/8in.	1 3/4in.	-	1 1/16in.	8-32 x 1in. (2)
160mm	Pull	7 1/8in.	5/8in.	1 5/16in.	1 1/2in.	-	5/8in.	8-32 x 1in. (2)
128mm	Pull	5 13/16in.	5/8in.	1 5/16in.	1 1/2in.	-	5/8in.	8-32 x 1in. (2)
96mm	Pull	4 7/16in.	5/8in.	1 3/16in.	29/32in.	-	5/8in.	8-32 x 1in. (2)
-	Knob	1 3/8in.	1 1/8in.	1 1/4in.	7/8in.	-	5/8in.	8-32 x 1in. (1)

\*Product not shown, please visit [www.BerensonHardware.com](http://www.BerensonHardware.com) to view images and details.

### Epoch Edge Available Finishes, Sizes & Part Numbers

The pulls of this collection feature a semi-curved underside on the handle.



BRUSHED NICKEL

12in. CC	1230-1BPN-P
224mm CC	1224-1BPN-P
160mm CC	1218-1BPN-P
128mm CC	1212-1BPN-P
96mm CC	1206-1BPN-P
Knob	1200-1BPN-P



MATTE BLACK

12in. CC	1233-1055-P
224mm CC	1227-1055-P
160mm CC	1221-1055-P
128mm CC	1215-1055-P
96mm CC	1209-1055-P
Knob	1203-1055-P



MODERN BRUSHED GOLD

12in. CC	1234-1MDB-P
224mm CC	1228-1MDB-P
160mm CC	1222-1MDB-P
128mm CC	1216-1MDB-P
96mm CC	1210-1MDB-P
Knob	1204-1MDB-P



POLISHED CHROME

12in. CC	1232-1026-P
224mm CC	1226-1026-P
160mm CC	1220-1026-P
128mm CC	1214-1026-P
96mm CC	1208-1026-P
Knob	1202-1026-P



VERONA BRONZE

12in. CC	1231-10VB-P
224mm CC	1225-10VB-P
160mm CC	1219-10VB-P
128mm CC	1213-10VB-P
96mm CC	1207-10VB-P
Knob	1201-10VB-P



VINTAGE NICKEL

12in. CC	1235-1VTN-P
224mm CC	1229-1VTN-P
160mm CC	1223-1VTN-P
128mm CC	1217-1VTN-P
96mm CC	1211-1VTN-P
Knob	1205-1VTN-P



# FLUIDIC

## UPTOWN APPEAL - Contemporary Style

Collection Featured in Brushed Nickel

Scan the QR Code above for more details!

CONTEMPORARY

Slight peaks flow diagonally across the surface like *gentle waves* rolling over a body of water.



### Fluidic Available Finishes, Sizes & Part Numbers

The pulls of this collection feature a flat underside on the handle.



BLACK

128mm CC 9440-1055-P

96mm CC 9439-1055-P

Knob 9441-1055-P



BRUSHED NICKEL

128mm CC 9478-1BPN-P

96mm CC 9476-1BPN-P

Knob 9480-1BPN-P



POLISHED CHROME

128mm CC 9477-1026-P

96mm CC 9475-1026-P

Knob 9479-1026-P

### Fluidic Product Data

CC	Product Type	Length	Width	Height/Projection	Hand Clearance	Diameter	Base	Tap/Screws (Qty)
128mm	Pull	6 1/4in.	1 3/4in.	1 3/8in.	1 5/16in.	-	7/16in.	8-32 x 1in. (2)
96mm	Pull	4 1/4in.	1 3/4in.	1 3/8in.	6/16in.	-	7/16in.	8-32 x 1in. (2)
-	Knob	1 3/8in.	1 1/8in.	1 1/8in.	-	-	11/16in.	8-32 x 1in. (1)

UPTOWN APPEAL



Featuring the Laura Collection in Polished Chrome

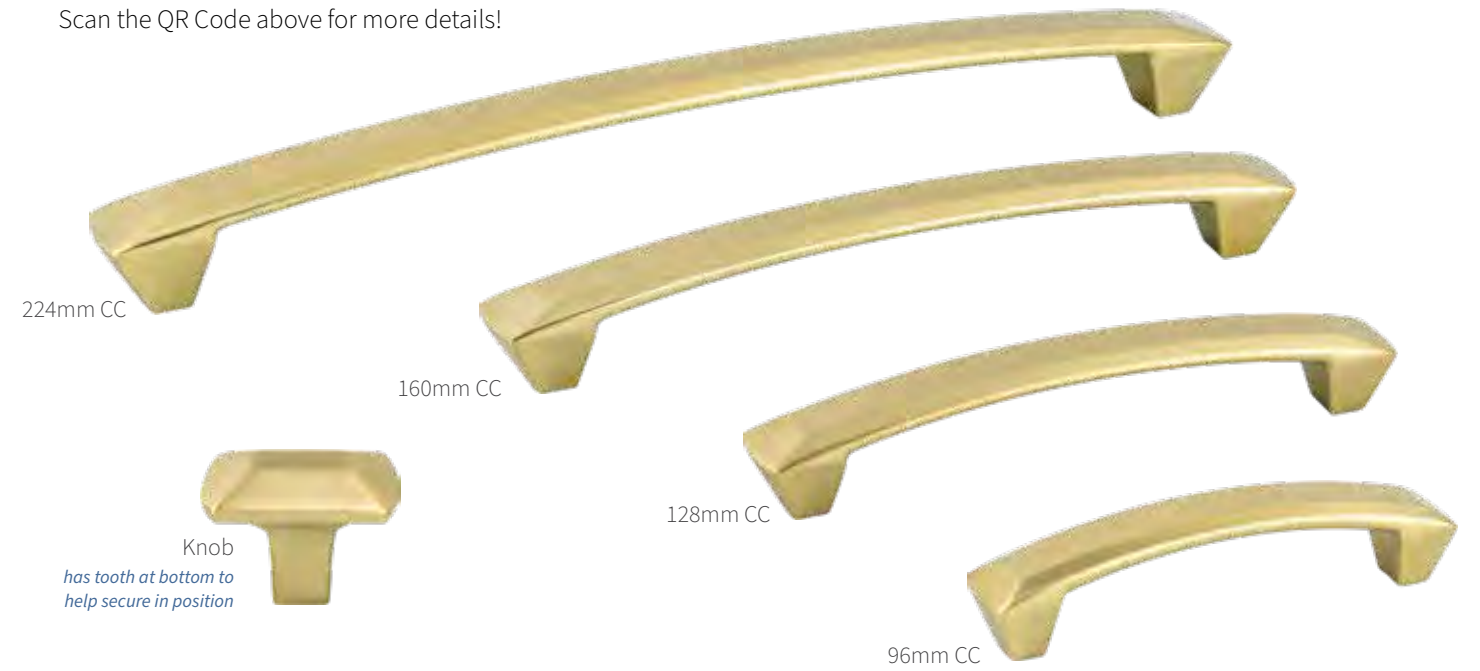


# LAURA

## UPTOWN APPEAL - Contemporary Style

Collection Featured in Modern Brushed Gold

Scan the QR Code above for more details!



### Laura Available Finishes, Sizes & Part Numbers

The pulls of this collection feature a flat underside on the handle.



BRUSHED NICKEL		MODERN BRUSHED GOLD		POLISHED CHROME		VINTAGE NICKEL	
224mm CC	9813-1BPN-P	224mm CC	9817-1MDB-P	224mm CC	9820-1026-P	224mm CC	9824-1VTN-P
160mm CC	9812-1BPN-P	160mm CC	9816-1MDB-P	160mm CC	9819-1026-P	160mm CC	9823-1VTN-P
128mm CC	4077-1BPN-P	128mm CC	9815-1MDB-P	128mm CC	4087-1026-P	128mm CC	9822-1VTN-P
96mm CC	4072-1BPN-P	96mm CC	9814-1MDB-P	96mm CC	4084-1026-P	96mm CC	9821-1VTN-P
Knob	4088-1BPN-P	Knob	9818-1MDB-P	Knob	4090-1026-P	Knob	9827-1VTN-P

### Laura Product Data

CC	Product Type	Length	Width	Height/Projection	Hand Clearance	Diameter	Base	Tap/Screws (Qty)
224mm	Pull	9 3/4in.	1 3/4in.	1 3/4in.	5/64in.	-	5/16in.	8-32 x 1in. (2)
160mm	Pull	7 1/4in.	1 3/4in.	1 1/4in.	29/32in.	-	5/16in.	8-32 x 1in. (2)
128mm	Pull	6in.	7/8in.	1in.	7/8in.	-	5/16in.	8-32 x 1in. (2)
96mm	Pull	4 7/8in.	7/8in.	1in.	5/64in.	-	5/16in.	8-32 x 1in. (2)
-	Knob	1 7/8in.	1in.	1in.	5/8in.	-	7/16in.	8-32 x 1in. (1)

CC = center to center | images of parts are not shown at 100% scale



Featuring the Metro Collection in Slate



## UPTOWN APPEAL - Contemporary Style

Collection Featured in Matte Black

Scan the QR Code above for more details!



Knob  
has tooth at bottom to help secure in position

### Metro Product Data

CC	Product Type	Length	Width	Height/Projection	Hand Clearance	Diameter	Base	Tap/Screws (Qty)
*18in.	Appliance Pull	18 1/4in.	1 1/4in.	2 3/32in.	1 25/64in.	-	23/32in.	10-24 x 1in. (2)
*320mm	Pull	13in.	7/16in.	1 3/8in.	59/64in.	-	3/8in.	8-32 x 1in. (2)
224mm	Pull	9 1/4in.	7/16in.	1 3/8in.	59/64in.	-	3/8in.	8-32 x 1in. (2)
160mm	Pull	6 1 1/8in.	7/16in.	1 3/8in.	29/32in.	-	3/8in.	8-32 x 1in. (2)
128mm	Pull	5 7/8in.	7/16in.	1 3/8in.	29/32in.	-	3/8in.	8-32 x 1in. (2)
96mm	Pull	4 3/8in.	7/16in.	1 3/8in.	29/32in.	-	3/8in.	8-32 x 1in. (2)
-	Knob	1 3/8in.	1 3/8in.	1 1/4in.	3 1/2in.	-	5/16in.	8-32 x 1in. (1)

\*Product not shown, please visit [www.BerensonHardware.com](http://www.BerensonHardware.com) to view images and details.

### Metro Available Finishes, Sizes & Part Numbers

The pulls of this collection feature a curved underside on the handle.

+2 Additional 8-32 x 1 3/4in. break-off screws provided for pulls. 1 Additional 8-32 x 1 3/4in. break-off screw provided for knob.



BRUSHED NICKEL

18in. CC	9860-1BPN-P
320mm CC	9857-1BPN-P
224mm CC	9828-1BPN-P
160mm CC	4118-1BPN-P
128mm CC	4113-1BPN-P
96mm CC	4108-1BPN-P
Knob	4122-1BPN-P



MATTE BLACK

18in. CC	9861-1055-P
320mm CC	9859-1055-P
224mm CC	9858-1055-P
160mm CC	+4121-1055-P
128mm CC	4116-1055-P
96mm CC	+4111-1055-P
Knob	+4126-1055-P



MODERN BRUSHED GOLD

18in. CC	9912-1MDB-P
320mm CC	9902-1MDB-P
224mm CC	9901-1MDB-P
160mm CC	9899-1MDB-P
128mm CC	9898-1MDB-P
96mm CC	9897-1MDB-P
Knob	9903-1MDB-P



POLISHED CHROME

18in. CC	9916-1026-P
320mm CC	9905-1026-P
224mm CC	9904-1026-P
160mm CC	4119-1026-P
128mm CC	4114-1026-P
96mm CC	4109-1026-P
Knob	4124-1026-P



POLISHED COPPER

18in. CC	Not Available
320mm CC	4184-10PC-P
224mm CC	4183-10PC-P
160mm CC	4182-10PC-P
128mm CC	4181-10PC-P
96mm CC	4180-10PC-P
Knob	4185-10PC-P



SLATE

18in. CC	9973-1SLT-P
320mm CC	9970-1SLT-P
224mm CC	9909-1SLT-P
160mm CC	9908-1SLT-P
128mm CC	9907-1SLT-P
96mm CC	9906-1SLT-P
Knob	9971-1SLT-P

# RADIAL REIGN

## UPTOWN APPEAL - Contemporary Style

Collection Featured in Matte Black and Modern Brushed Gold

Scan the QR Code above for more details!

NEW



Appliance Pull  
Also Available

12in. CC

Knob  
has tooth at bottom to  
help secure in position

### Radial Reign Product Data

CC	Product Type	Length	Width	Height/ Projection	Hand Clearance	Diameter	Base	Tap/Screws (Qty)
*12in.	Appliance Pull	14 3/16in.	2 3/32in.	1 7/16in.	1 3/16in.	-	1 5/32in.	10-24 x 1in. (2)
224mm	Pull	11 3/16in.	2 3/32in.	1 7/16in.	1 3/16in.	-	1 5/32in.	8-32 x 1in. (2)
160mm	Pull	8 2 3/32in.	2 3/32in.	1 7/16in.	1 3/16in.	-	1 5/32in.	8-32 x 1in. (2)
128mm	Pull	7 1 3/32in.	2 3/32in.	1 7/16in.	1 3/16in.	-	1 5/32in.	8-32 x 1in. (2)
96mm	Pull	6 5/32in.	2 3/32in.	1 7/16in.	1 3/16in.	-	1 5/32in.	8-32 x 1in. (2)
-	Knob	2in.	2 3/32in.	1 7/16in.	1 3/16in.	-	1 5/32in.	8-32 x 1in. (1)

\*Product not shown, please visit [www.BerensonHardware.com](http://www.BerensonHardware.com) to view images and details.

### Radial Reign Available Finishes, Sizes & Part Numbers

The pulls of this collection feature a flat underside on the handle.



#### BLACK NICKEL DESIGNER'S CHOICE

12in. CC	5077-4098-P
224mm CC	5076-4098-P
160mm CC	5075-4098-P
128mm CC	5074-4098-P
96mm CC	5073-4098-P
Knob	5072-4098-P



#### BRUSHED NICKEL

12in. CC	5029-4BPN-P
224mm CC	5028-4BPN-P
160mm CC	5027-4BPN-P
128mm CC	5026-4BPN-P
96mm CC	5025-4BPN-P
Knob	5024-4BPN-P



#### BRUSHED NICKEL AND MATTE BLACK

12in. CC	5071-4BPN55-P
224mm CC	5070-4BPN55-P
160mm CC	5069-4BPN55-P
128mm CC	5068-4BPN55-P
96mm CC	5067-4BPN55-P
Knob	5066-4BPN55-P



#### MATTE BLACK

12in. CC	5041-4055-P
224mm CC	5040-4055-P
160mm CC	5039-4055-P
128mm CC	5038-4055-P
96mm CC	5037-4055-P
Knob	5036-4055-P



#### MATTE BLACK AND BRUSHED NICKEL

12in. CC	5065-455BPN-P
224mm CC	5064-455BPN-P
160mm CC	5063-455BPN-P
128mm CC	5062-455BPN-P
96mm CC	5061-455BPN-P
Knob	5060-455BPN-P



#### MATTE BLACK AND MODERN BRUSHED GOLD

12in. CC	5059-455MDB-P
224mm CC	5058-455MDB-P
160mm CC	5057-455MDB-P
128mm CC	5056-455MDB-P
96mm CC	5055-455MDB-P
Knob	5054-455MDB-P



#### MODERN BRUSHED GOLD

12in. CC	5053-4MDB-P
224mm CC	5052-4MDB-P
160mm CC	5051-4MDB-P
128mm CC	5050-4MDB-P
96mm CC	5049-4MDB-P
Knob	5048-4MDB-P



#### POLISHED CHROME

12in. CC	5035-4026-P
224mm CC	5034-4026-P
160mm CC	5033-4026-P
128mm CC	5032-4026-P
96mm CC	5031-4026-P
Knob	5030-4026-P



#### SLATE

12in. CC	5047-4SLT-P
224mm CC	5046-4SLT-P
160mm CC	5045-4SLT-P
128mm CC	5044-4SLT-P
96mm CC	5043-4SLT-P
Knob	5042-4SLT-P

## UPTOWN APPEAL - Contemporary Style

Collection Featured in Slate

Scan the QR Code above for more details!



### Skyline Product Data

CC	Product Type	Length	Width	Height/Projection	Hand Clearance	Diameter	Base	Tap/Screws (Qty)
*320mm	Pull	13in.	5/8in.	1 1/4in.	7/8in.	-	1 3/8in.	8-32 x 1in. (2)
224mm	Pull	9 1/4in.	5/8in.	1 1/4in.	7/8in.	-	1 3/8in.	8-32 x 1in. (2)
160mm	Pull	6 1/4in.	5/8in.	1 1/4in.	7/8in.	-	1in.	8-32 x 1in. (2)
3in. & 96mm	Pull	4 3/4in.	5/8in.	1 1/4in.	7/8in.	-	1 3/8in.	8-32 x 1in. (2)
-	Knob	1 3/8in.	3/4in.	1 1/4in.	4/8in.	-	3/8in.	8-32 x 1in. (1)

\*Product not shown, please visit [www.BerensonHardware.com](http://www.BerensonHardware.com) to view images and details.



## Skyline Available Finishes, Sizes & Part Numbers

The pulls of this collection feature a flat underside on the handle.



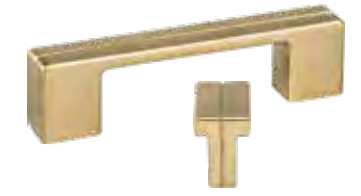
BRUSHED NICKEL

320mm CC	9974-1BPN-P
224mm CC	9206-1BPN-P
160mm CC	9203-1BPN-P
3in. & 96mm CC	9200-1BPN-P
Knob	9209-1BPN-P



MATTE BLACK

320mm CC	9975-1055-P
224mm CC	9208-1055-P
160mm CC	9205-1055-P
3in. & 96mm CC	9202-1055-P
Knob	9211-1055-P



MODERN BRUSHED GOLD

320mm CC	9993-1MDB-P
224mm CC	9978-1MDB-P
160mm CC	9977-1MDB-P
3in. & 96mm CC	9976-1MDB-P
Knob	9995-1MDB-P



POLISHED CHROME

320mm CC	1120-1026-P
224mm CC	9207-1026-P
160mm CC	9204-1026-P
3in. & 96mm CC	9201-1026-P
Knob	9210-1026-P



SLATE

320mm CC	1124-1SLT-P
224mm CC	1123-1SLT-P
160mm CC	1122-1SLT-P
3in. & 96mm CC	1121-1SLT-P
Knob	1125-1SLT-P

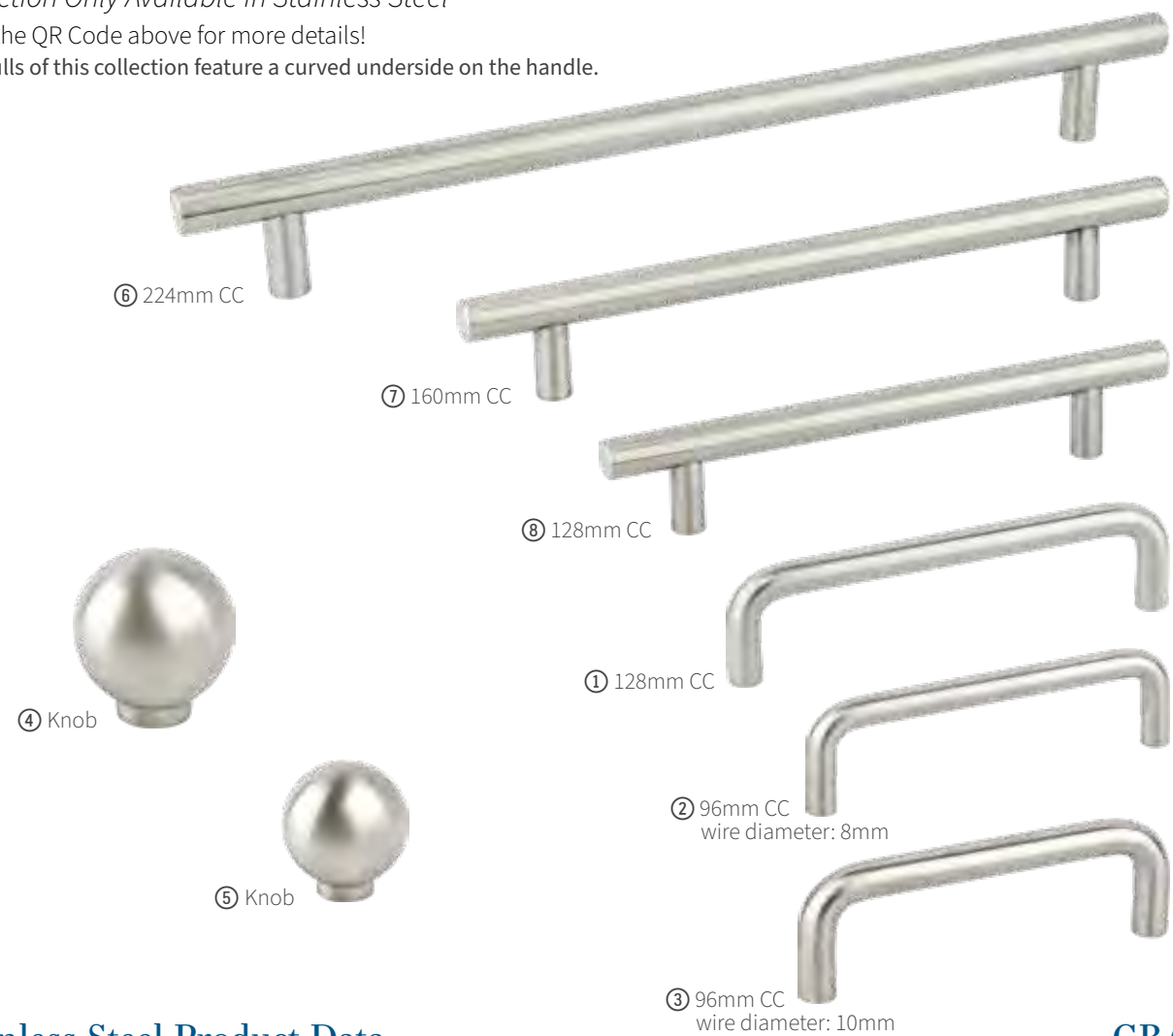
# STAINLESS STEEL

## UPTOWN APPEAL - Contemporary Style

Collection Only Available in Stainless Steel

Scan the QR Code above for more details!

The pulls of this collection feature a curved underside on the handle.



### Stainless Steel Product Data

GRADE 304

	Part No.	CC	Product Type	Length	Width	Height/Projection	Hand Clearance	Diameter	Base	Tap/Screws (Qty)
	7067-9SS-C	*672mm	Pull	28 3/8in.	1/2in.	1 1/4in.	1 3/8in.	-	1/2in.	M4 x 45mm BO (3)
	7073-9SS-C	*448mm	Pull	19 1/8in.	1/2in.	1 1/4in.	1 3/8in.	-	1/2in.	M4 x 45mm BO (2)
	7072-9SS-C	*384mm	Pull	17 1/8in.	1/2in.	1 1/4in.	1 3/8in.	-	1/2in.	M4 x 45mm BO (2)
	7071-9SS-C	*288mm	Pull	13 3/8in.	1/2in.	1 1/4in.	1 3/8in.	-	1/2in.	M4 x 45mm BO (2)
	7077-9SS-C	*288mm	Pull	11 3/8in.	3/8in.	1 3/8in.	1 1/4in.	-	3/8in.	M4 x 45mm BO (2)
1	7076-9SS-C	128mm	Pull	5 7/8in.	3/8in.	1 3/8in.	1 1/4in.	-	3/8in.	M4 x 45mm BO (2)
2	7074-9SS-C	96mm	Pull	4 1/8in.	5/8in.	1 1/8in.	7/8in.	-	5/8in.	M4 x 45mm BO (2)
3	7075-9SS-C	96mm	Pull	4 3/8in.	3/8in.	1 3/8in.	1 1/4in.	-	3/8in.	M4 x 45mm BO (2)
4	7078-9SS-C	-	Knob	-	-	1 1/4in.	-	1 3/8in.	5/8in.	M4 x 45mm BO (1)
5	7079-9SS-C	-	Knob	-	-	1 1/8in.	-	1in.	7/8in.	M4 x 45mm BO (1)
6	7070-9SS-C	224mm	Pull	10 1/8in.	1/2in.	1 1/4in.	1 3/8in.	-	1/2in.	M4 x 45mm BO (2)
7	7069-9SS-C	160mm	Pull	8 1/4in.	1/2in.	1 1/4in.	1 3/8in.	-	1/2in.	M4 x 45mm BO (2)
8	7068-9SS-C	128mm	Pull	7in.	1/2in.	1 1/4in.	1 3/8in.	-	1/2in.	M4 x 45mm BO (2)

\*Product not shown, please visit [www.BerensonHardware.com](http://www.BerensonHardware.com) to view images and details.

■ Part is hollow.

# STUDIO

## UPTOWN APPEAL - Contemporary Style

Collection Only Available in Stainless Steel

Scan the QR Code above for more details!

The pulls of this collection feature a curved underside on the handle.



### Studio Product Data

Part No.	CC	Product Type	Length	Width	Height/Projection	Hand Clearance	Diameter	Base	Tap/Screws (Qty)
2027-90SS-P	*576mm	Pull	23 1/8in.	5/8in.	1 7/8in.	7/8in.	-	7/8in.	8-32 x 1in. (2)
2026-90SS-P	*288mm	Pull	11 7/8in.	5/8in.	1 7/8in.	7/8in.	-	7/8in.	8-32 x 1in. (2)
2025-90SS-P	256mm	Pull	10 5/8in.	5/8in.	1 7/8in.	7/8in.	-	7/8in.	8-32 x 1in. (2)
2024-90SS-P	224mm	Pull	9 3/8in.	5/8in.	1 7/8in.	7/8in.	-	7/8in.	8-32 x 1in. (2)
2023-90SS-P	192mm	Pull	8 1/8in.	5/8in.	1 7/8in.	7/8in.	-	7/8in.	8-32 x 1in. (2)
2022-90SS-P	160mm	Pull	6 7/8in.	5/8in.	1 7/8in.	7/8in.	-	7/8in.	8-32 x 1in. (2)
2021-90SS-P	128mm	Pull	5 5/8in.	5/8in.	1 7/8in.	7/8in.	-	7/8in.	8-32 x 1in. (2)

\*Product not shown, please visit [www.BerensonHardware.com](http://www.BerensonHardware.com) to view images and details.

■ Part is hollow.

## UPTOWN APPEAL - Contemporary Style

Collection Featured in Modern Brushed Gold

Scan the QR Code above for more details!



### Swagger Product Data

CC	Product Type	Length	Width	Height/Projection	Hand Clearance	Diameter	Base	Tap/Screws (Qty)
*320mm	Pull	13 1/4in.	5/8in.	1 1/4in.	1 5/8in.	-	1/2in.	8-32 x 1in. (2)
224mm	Pull	9 5/8in.	5/8in.	1 1/4in.	1 5/8in.	-	1/2in.	8-32 x 1in. (2)
160mm	Pull	6 3/4in.	5/8in.	1 1/4in.	1 5/8in.	-	1/2in.	8-32 x 1in. (2)
128mm	Pull	5 1/2in.	5/8in.	1 1/4in.	1 5/8in.	-	1/2in.	8-32 x 1in. (2)
96mm	Pull	4 3/4in.	5/8in.	1 1/4in.	1 5/8in.	-	1/2in.	8-32 x 1in. (2)
-	Knob	1 3/4in.	1 3/8in.	1 1/4in.	7/8in.	-	7/8in.	8-32 x 1in. (1)

\*Product not shown, please visit [www.BerensonHardware.com](http://www.BerensonHardware.com) to view images and details.

### Swagger Available Finishes, Sizes & Part Numbers

The pulls of this collection feature a flat underside on the handle.



BLACK NICKEL

320mm CC	2323-1098-P
224mm CC	2320-1098-P
160mm CC	2317-1098-P
128mm CC	2314-1098-P
96mm CC	2385-1098-P
Knob	2326-1098-P



BRUSHED NICKEL

320mm CC	2321-1BPN-P
224mm CC	2318-1BPN-P
160mm CC	2315-1BPN-P
128mm CC	2312-1BPN-P
96mm CC	2386-1BPN-P
Knob	2324-1BPN-P



MATTE BLACK

320mm CC	2411-1055-P
224mm CC	2398-1055-P
160mm CC	2397-1055-P
128mm CC	2396-1055-P
96mm CC	2395-1055-P
Knob	2394-1055-P



MODERN BRUSHED GOLD

320mm CC	2367-1MDB-P
224mm CC	2366-1MDB-P
160mm CC	2365-1MDB-P
128mm CC	2364-1MDB-P
96mm CC	2387-1MDB-P
Knob	2368-1MDB-P



POLISHED CHROME

320mm CC	2322-1026-P
224mm CC	2319-1026-P
160mm CC	2316-1026-P
128mm CC	2313-1026-P
96mm CC	2388-1026-P
Knob	2325-1026-P



SLATE

320mm CC	2412-1SLT-P
224mm CC	2393-1SLT-P
160mm CC	2392-1SLT-P
128mm CC	2391-1SLT-P
96mm CC	2390-1SLT-P
Knob	2389-1SLT-P



# TIMELESS CHARM

## TRADITIONAL STYLE

Bring strength & grace through classic hardware designs to reach an inviting, timeless impact.



Featuring the Tailored Traditional Collection in Modern Brushed Gold Design and photos by Jennifer Hutton at Artisan Kitchens and Baths, @JenniferHutton\_Pro

# AMERICAN CLASSICS

## TIMELESS CHARM - Traditional Style

Collection Featured in Rubbed Bronze

Scan the QR Code above for more details!



### American Classics Product Data

	CC	Product Type	Length	Width	Height/Projection	Hand Clearance	Diameter	Base	Tap/Screws (Qty)
1	3in.	Pull	3 1/4in.	3/4in.	1 1/4in.	7/8in.	-	5/8in.	8-32 x 1in. (2)
2	3in.	Cup Pull	4 1/4in.	1 7/8in.	1 5/8in.	5/8in.	-	-	8-32 x 1in. (2)
3	-	Knob	1 5/8in.	7/8in.	1 1/4in.	-	-	5/8in.	8-32 x 1in. (1)
4	-	Knob	-	-	1 1/8in.	3/8in.	1 3/8in.	5/8in.	8-32 x 1in. (1)
5	-	Knob	-	-	1in.	4/8in.	1 1/8in.	5/8in.	+8-32 x 1in. (1)

### American Classics Available Finishes, Sizes & Part Numbers

The pulls of this collection feature a curved underside on the handle.

+1 Additional 8-32 x 1 3/4in. break-off screw provided.



#### BRUSHED NICKEL

3in. CC Pull	9886-1BPN-P
3in. CC Cup Pull	9896-1BPN-P
③ Knob	9937-1BPN-P
④ Knob	9079-1BPN-P
⑤ Knob	+9924-1BPN-P



#### DULL RUST

3in. CC Pull	9887-1FE-P
3in. CC Cup Pull	9892-1FE-P
③ Knob	9934-1FE-P
④ Knob	2055-1FE-P
⑤ Knob	Not Available



#### RUBBED BRONZE

3in. CC Pull	9885-110-P
3in. CC Cup Pull	9890-110-P
③ Knob	9933-110-P
④ Knob	9938-110-P
⑤ Knob	9923-110-P



#### WEATHERED COPPER

3in. CC Pull	9889-1WC-P
3in. CC Cup Pull	9893-1WC-P
③ Knob	9935-1WC-P
④ Knob	9941-1WC-P
⑤ Knob	9925-1WC-P



#### WEATHERED NICKEL

3in. CC Pull	9888-1WN-P
3in. CC Cup Pull	9895-1WN-P
③ Knob	9936-1WN-P
④ Knob	9942-1WN-P
⑤ Knob	9927-1WN-P

TRADITIONAL

Faux screws and buttons add a classically *rustic charm.*



# ANDANTE

## TIMELESS CHARM - *Traditional Style*

Collection Featured in Antique Pewter  
Scan the QR Code above for more details!



### Andante Available Finishes, Sizes & Part Numbers

The cup pulls of this collection feature a curved underside on the handle.

+2 Additional 8-32 x 1 3/4in. break-off screws provided.



ANTIQUPEWTER

128mm CC	+3011-1AP-P
96mm CC	7888-1AP-P
64mm CC	+3012-1AP-P
Knob	7893-1AP-P



BRUSHED NICKEL

128mm CC	7881-1BPN-P
96mm CC	+3014-1BPN-P
64mm CC	7884-1BPN-P
Knob	7891-1BPN-P



DULL BRONZE

128mm CC	+3008-1DBZ-P
96mm CC	7889-1DBZ-P
64mm CC	+3009-1DBZ-P
Knob	7894-1DBZ-P

### Andante Product Data

CC	Product Type	Length	Width	Height/Projection	Hand Clearance	Diameter	Base	Tap/Screws (Qty)
128mm	Pull	5 1/4in.	5/8in.	1 1/4in.	5/8in.	-	5/8in.	+8-32 x 1in. (2)
96mm	Pull	4 1/4in.	1 1/4in.	1 1/8in.	5/8in.	-	1 1/8in.	+8-32 x 1in. (2)
64mm	Cup Pull	4 1/4in.	1 1/4in.	1in.	7/8in.	-	-	+8-32 x 1in. (2)
-	Knob	-	-	1in.	1 1/8in.	1 3/8in.	1in.	8-32 x 1in. (1)





Featuring the Echo Collection in Brushed Nickel  
 Design and photos by Jennifer Hutton at  
 Artisan Kitchens and Baths,  
 @JenniferHutton\_Pro



# ECHO

## TIMELESS CHARM - Traditional Style

Collection Featured in Matte Black  
 Scan the QR Code above for more details!



### Echo Available Finishes, Sizes & Part Numbers

The pulls of this collection feature a flat underside on the handle.

BRUSHED NICKEL		MATTE BLACK		OIL RUBBED BRONZE	
96mm CC	9225-1BPN-P	96mm CC	9261-1055-P	96mm CC	9224-1ORB-P
3in. CC	9222-1BPN-P	3in. CC	9260-1055-P	3in. CC	9221-1ORB-P
Knob	9228-1BPN-P	Knob	9262-1055-P	Knob	9227-1ORB-P
POLISHED NICKEL		VERONA BRONZE			
96mm CC	9258-1014-P	96mm CC	9226-10VB-P		
3in. CC	9257-1014-P	3in. CC	9223-10VB-P		
Knob	9259-1014-P	Knob	9229-10VB-P		

### Echo Product Data

CC	Product Type	Length	Width	Height/Projection	Hand Clearance	Diameter	Base	Tap/Screws (Qty)
96mm	Pull	5 3/4in.	3/4in.	1 1/4in.	6 3/4in.	-	1 1/2in.	8-32 x 1in. (2)
3in.	Pull	4 3/4in.	3/4in.	1 1/2in.	1 5/8in.	-	1in.	8-32 x 1in. (2)
-	Knob	-	-	1 3/8in.	-	1 3/8in.	5/8in.	8-32 x 1in. (1)

# EURO TRADITIONS

## TIMELESS CHARM - Traditional Style

Collection Featured in Brushed Antique Copper

Scan the QR Code above for more details!



## Euro Traditions Available Finishes, Sizes & Part Numbers

The pulls of this collection feature a flat underside on the handle.



### BRUSHED ANTIQUE COPPER

96mm CC	2933-1BAC-P
Knob	2923-1BAC-P



### BRUSHED ANTIQUE PEWTER

96mm CC	2934-1BAP-P
Knob	2924-1BAP-P



### BRUSHED BLACK NICKEL

96mm CC	2931-1BBN-P
Knob	2921-1BBN-P



### BRUSHED NICKEL

96mm CC	2930-1BPN-P
Knob	2920-1BPN-P



### DULL RUST

96mm CC	2938-1FE-P
Knob	2928-1FE-P



### MATTE BLACK

96mm CC	2937-155-P
Knob	2927-155-P

## Euro Traditions Product Data

CC	Product Type	Length	Width	Height/Projection	Hand Clearance	Diameter	Base	Tap/Screws (Qty)
96mm	Pull	4 5/8in.	5/8in.	1 1/2in.	5/8in.	-	5/8in.	8-32 x 1in. (2)
-	Knob	-	-	1 1/2in.	3/4in.	1 3/8in.	3/4in.	8-32 x 1 1/2in. (1)

# HARMONY

## TIMELESS CHARM - Traditional Style

Collection Featured in Vintage Nickel

Scan the QR Code above for more details!



## Harmony Available Finishes, Sizes & Part Numbers

The pulls of this collection feature a flat underside on the handle.



### BRUSHED NICKEL

160mm CC	9456-1BPN-P
128mm CC	9450-1BPN-P
96mm CC	9444-1BPN-P
3in. CC	9438-1BPN-P
Knob	9462-1BPN-P



### VERONA BRONZE

160mm CC	9455-10VB-P
128mm CC	9449-10VB-P
96mm CC	9443-10VB-P
3in. CC	9437-10VB-P
Knob	9461-10VB-P



### VINTAGE NICKEL

160mm CC	9579-1VTN-P
128mm CC	9578-1VTN-P
96mm CC	9577-1VTN-P
3in. CC	9576-1VTN-P
Knob	9580-1VTN-P



### WEATHERED NICKEL

160mm CC	9454-10WN-P
128mm CC	9448-10WN-P
96mm CC	9442-10WN-P
3in. CC	9436-10WN-P
Knob	9460-10WN-P

## Harmony Product Data

CC	Product Type	Length	Width	Height/Projection	Hand Clearance	Diameter	Base	Tap/Screws (Qty)
160mm	Pull	6 7/8in.	1 1/2in.	1 1/2in.	5/8in.	-	5/8in.	8-32 x 1 1/2in. (2)
128mm	Pull	5 11/8in.	1 1/2in.	1 1/2in.	5/8in.	-	5/8in.	8-32 x 1 1/2in. (2)
96mm	Pull	4 7/8in.	1 1/2in.	1 1/2in.	5/8in.	-	5/8in.	8-32 x 1 1/2in. (2)
3in.	Pull	3 11/8in.	1 1/2in.	1 1/2in.	5/8in.	-	5/8in.	8-32 x 1 1/2in. (2)
-	Knob	1 3/8in.	1 3/8in.	1 1/2in.	1 3/8in.	-	5/8in.	8-32 x 1 1/2in. (1)

Parts in the Harmony Collection feature removable inserts that can be interchanged with other parts of the same length to create a unique mixed metal piece. Please note that pieces do not come as mixed metal. Hardware must be purchased separately and mixed as needed for design.

CC = center to center | images of parts are not shown at 100% scale



Featuring the Hearthstone Collection  
in Matte Black



# HEARTHSTONE

## TIMELESS CHARM - Traditional Style

Collection Featured in Matte Black

Scan the QR Code above for more details!



### Appliance Pulls Also Available

18in. CC & 12in. CC

### Hearthstone Product Data

CC	Product Type	Length	Width	Height/Projection	Hand Clearance	Diameter	Base	Tap/Screws (Qty)
*18in.	Appliance Pull	19 1/4in.	1 1/2in.	1 5/8in.	1 3/8in.	-	1 3/8in.	10-24 x 1in. (2)
*12in.	Appliance Pull	13 3/8in.	3/4in.	1 13/16in.	1 23/64in.	-	1 1/8in.	10-24 x 1in. (2)
**6in.	Pull	7 3/8in.	1 1/8in.	1 11/16in.	1 5/32in.	-	1 1/8in.	8-32 x 1in. (2)
160mm	Pull	7 5/8in.	9/16in.	1 1/2in.	1 23/64in.	-	7/8in.	8-32 x 1in. (2)
128mm	Pull	6 1/8in.	1/2in.	1 7/8in.	1 1/64in.	-	7/8in.	8-32 x 1in. (2)
96mm	Pull	4 13/16in.	3/8in.	1 3/8in.	63/64in.	-	7/8in.	8-32 x 1in. (2)
3in.	Pull	3 15/16in.	3/8in.	1 3/8in.	63/64in.	-	13/16in.	8-32 x 1in. (2)
-	Knob	1 1/8in.	1 1/8in.	1 1/8in.	3/4in.	-	13/16in.	8-32 x 1in. (1)

\*Product not shown, please visit [www.BerensonHardware.com](http://www.BerensonHardware.com) to view images and details.

\*\*The 6in. CC pull features a wider width that adds dimension to kitchen and bath designs

### Hearthstone Available Finishes, Sizes & Part Numbers

The pulls of this collection feature a semi-curved underside on the handle.

See Designers' Group Ten collection on pages 23-24 to view the Polished Nickel finish.



BRUSHED NICKEL

18in. CC	2168-1BPN-P
12in. CC	2035-1BPN-P
6in. CC	4076-1BPN-P
160mm CC	2045-1BPN-P
128mm CC	2040-1BPN-P
96mm CC	4070-1BPN-P
3in. CC	4064-1BPN-P
Knob	4083-1BPN-P



MATTE BLACK

18in. CC	2169-1055-P
12in. CC	2038-1055-P
6in. CC	4080-1055-P
160mm CC	2048-1055-P
128mm CC	2043-1055-P
96mm CC	4074-1055-P
3in. CC	4068-1055-P
Knob	4086-1055-P



MODERN BRUSHED GOLD

18in. CC	2157-1MDB-P
12in. CC	2156-1MDB-P
6in. CC	2155-1MDB-P
160mm CC	2154-1MDB-P
128mm CC	2153-1MDB-P
96mm CC	2152-1MDB-P
3in. CC	2151-1MDB-P
Knob	2158-1MDB-P



VERONA BRONZE

18in. CC	2167-10VB-P
12in. CC	2034-10VB-P
6in. CC	4075-10VB-P
160mm CC	2044-10VB-P
128mm CC	2039-10VB-P
96mm CC	4069-10VB-P
3in. CC	4063-10VB-P
Knob	4081-10VB-P



VINTAGE NICKEL

18in. CC	2165-1VTN-P
12in. CC	2164-1VTN-P
6in. CC	2163-1VTN-P
160mm CC	2162-1VTN-P
128mm CC	2161-1VTN-P
96mm CC	2160-1VTN-P
3in. CC	2159-1VTN-P
Knob	2166-1VTN-P



WEATHERED VERONA BRONZE

18in. CC	Not Available
12in. CC	2037-1WVB-P
6in. CC	4079-1WVB-P
160mm CC	2047-1WVB-P
128mm CC	2042-1WVB-P
96mm CC	4073-1WVB-P
3in. CC	4067-1WVB-P
Knob	4085-1WVB-P

# HILLCREST

## TIMELESS CHARM - Traditional Style

Collection Featured in Verona Bronze

Scan the QR Code above for more details!



### Appliance Pull Also Available

256mm CC

## Hillcrest Available Finishes, Sizes & Part Numbers

The pulls of this collection feature a curved underside on the handle.



BRUSHED NICKEL

256mm CC	2073-1BPN-P
160mm CC	2071-1BPN-P
128mm CC	2069-1BPN-P
96mm CC	2049-1BPN-P



VERONA BRONZE

256mm CC	2074-10VB-P
160mm CC	2072-10VB-P
128mm CC	2070-10VB-P
96mm CC	2068-10VB-P

## Hillcrest Product Data

CC	Product Type	Length	Width	Height/Projection	Hand Clearance	Diameter	Base	Tap/Screws (Qty)
*256mm	Appliance Pull	12in.	1 3/16in.	1 7/16in.	1 7/16in.	-	1 3/16in.	10-24 x 1in. (2)
160mm	Pull	7 7/16in.	5/16in.	1 1/8in.	7/16in.	-	7/16in.	8-32 x 1in. (2)
128mm	Pull	6 5/16in.	5/16in.	1 1/8in.	5/16in.	-	7/16in.	8-32 x 1in. (2)
96mm	Pull	5 3/16in.	5/16in.	1 1/8in.	23/32in.	-	7/16in.	8-32 x 1in. (1)

\*Product not shown, please visit [www.BerensonHardware.com](http://www.BerensonHardware.com) to view images and details.

# PRELUDE

## TIMELESS CHARM — Traditional Style

Collection Available in All Finishes Shown

Scan the QR Code above for more details!

## Prelude Available Finishes, Sizes & Part Numbers



BRUSHED NICKEL

4in. 8012-BPN-P



MATTE BLACK

4in. 8014-55-P



OIL RUBBED BRONZE

4in. 8015-ORB-P



POLISHED BRASS

4in. 8010-03-P



POLISHED CHROME

4in. 8011-26-P



VERONA BRONZE

4in. 8016-VB-P



WEATHERED IRON

4in. 8017-LWI-P



WEATHERED NICKEL

4in. 8013-WN-P

## Prelude Product Data

CC	Product Type	Length	Width	Height/Projection	Hand Clearance	Diameter	Base	Screws (Qty)
-	Hook	4in.	3/16in.	3 1/16in.	-	-	1 1/16in.	5/16in. Wood (4)



Featuring the Tailored Traditional Collection in Verona Bronze  
Design and photos by Jennifer Hutton at  
Artisan Kitchens and Baths,  
@JenniferHutton\_Pro

# TAILORED TRADITIONAL

## TIMELESS CHARM - Traditional Style

Collection Featured in Matte Black  
Scan the QR Code above for more details!



Appliance Pull  
Also Available  
12in. CC

### Tailored Traditional Product Data

CC	Product Type	Length	Width	Height/Projection	Hand Clearance	Diameter	Base	Tap/Screws (Qty)
*12in.	Appliance Pull	13in.	1in.	1 1/16in.	1 1/8in.	-	1in.	10-24 x 1in. (2)
224mm	Pull	9 5/8in.	1 3/16in.	1 3/8in.	1in.	-	1 3/16in.	8-32 x 1in. (2)
160mm	Pull	7in.	1 1/16in.	1 3/8in.	1 1/4in.	-	1 1/16in.	8-32 x 1in. (2)
128mm	Pull	5 3/4in.	2 3/32in.	1 5/16in.	1 1/4in.	-	2 3/32in.	8-32 x 1in. (2)
96mm	Pull	4 1/2in.	2 3/32in.	1 5/16in.	1in.	-	2 3/32in.	8-32 x 1in. (2)
-	Knob	1 1/4in.	1 1/4in.	1 1/4in.	2 1/32in.	-	1 1/16in.	8-32 x 1in. (1)

\*Product not shown, please visit [www.BerensonHardware.com](http://www.BerensonHardware.com) to view images and details.

### Tailored Traditional Available Finishes, Sizes & Part Numbers

The pulls of this collection feature a curved underside on the handle.



BRUSHED NICKEL

12in. CC	1302-1BPN-P
224mm CC	1296-1BPN-P
160mm CC	1290-1BPN-P
128mm CC	1284-1BPN-P
96mm CC	1278-1BPN-P
Knob	1272-1BPN-P



MATTE BLACK

12in. CC	1305-1055-P
224mm CC	1299-1055-P
160mm CC	1293-1055-P
128mm CC	1287-1055-P
96mm CC	1281-1055-P
Knob	1275-1055-P



MODERN BRUSHED GOLD

12in. CC	1306-1MDB-P
224mm CC	1300-1MDB-P
160mm CC	1294-1MDB-P
128mm CC	1288-1MDB-P
96mm CC	1282-1MDB-P
Knob	1276-1MDB-P



POLISHED NICKEL

12in. CC	1304-1014-P
224mm CC	1298-1014-P
160mm CC	1292-1014-P
128mm CC	1286-1014-P
96mm CC	1280-1014-P
Knob	1274-1014-P



VERONA BRONZE

12in. CC	1303-10VB-P
224mm CC	1297-10VB-P
160mm CC	1291-10VB-P
128mm CC	1285-10VB-P
96mm CC	1279-10VB-P
Knob	1273-10VB-P



VINTAGE NICKEL

12in. CC	1307-1VTN-P
224mm CC	1301-1VTN-P
160mm CC	1295-1VTN-P
128mm CC	1289-1VTN-P
96mm CC	1283-1VTN-P
Knob	1277-1VTN-P



# VESTED INTEREST

## TIMELESS CHARM - Traditional Style

Collection Featured in Vintage Nickel

Scan the QR Code above for more details!



Appliance Pull Also Available

12in. CC

## Vested Interest Available Finishes, Sizes & Part Numbers

The pulls of this collection feature a flat underside on the handle.



BRUSHED NICKEL

12in. CC	2335-1BPN-P
224mm CC	2333-1BPN-P
160mm CC	2331-1BPN-P
128mm CC	2329-1BPN-P
96mm CC	2327-1BPN-P
Knob	2337-1BPN-P



VERONA BRONZE

12in. CC	2336-10VB-P
224mm CC	2334-10VB-P
160mm CC	2332-10VB-P
128mm CC	2330-10VB-P
96mm CC	2328-10VB-P
Knob	2338-10VB-P



VINTAGE NICKEL

12in. CC	2373-1VTN-P
224mm CC	2372-1VTN-P
160mm CC	2371-1VTN-P
128mm CC	2370-1VTN-P
96mm CC	2369-1VTN-P
Knob	2374-1VTN-P

## Vested Interest Product Data

CC	Product Type	Length	Width	Height/Projection	Hand Clearance	Diameter	Base	Tap/Screws (Qty)
*12in.	Appliance Pull	13 1/4in.	1 5/16in.	1 3/4in.	1 1/4in.	-	3/8in.	10-24 x 1in. (2)
224mm	Pull	9 3/4in.	3/4in.	1 3/8in.	1 1/4in.	-	9/16in.	8-32 x 1in. (2)
160mm	Pull	7 1/4in.	1 1/16in.	1 1/2in.	2 9/32in.	-	1/2in.	8-32 x 1in. (2)
128mm	Pull	6in.	5/8in.	1 3/8in.	5 5/16in.	-	1/2in.	8-32 x 1in. (2)
96mm	Pull	4 3/4in.	5/8in.	1 3/8in.	5 5/16in.	-	1/2in.	8-32 x 1in. (2)
-	Knob	-	-	1 5/16in.	4 1/4in.	1 1/4in.	1 1/16in.	8-32 x 1in. (1)

\*Product not shown, please visit [www.BerensonHardware.com](http://www.BerensonHardware.com) to view images and details.





# VIBRATO

## TIMELESS CHARM - *Traditional Style*

Collection Only Available in Verona Bronze

Scan the QR Code above for more details!



### Vibrato Product Data

	Part No.	CC	Product Type	Length	Width	Height/Projection	Hand Clearance	Diameter	Base	Tap/Screws (Qty)
1	7904-1VB-P	128mm	Pull	6 7/8in.	5/8in.	1 5/8in.	-	-	1/2in.	8-32 x 1in. (2)
2	7905-1VB-P	96mm	Pull	5 3/8in.	5/8in.	1 5/8in.	-	-	1/2in.	8-32 x 1in. (2)
3	7906-1VB-P	-	Knob	1 1/8in.	1/2in.	1 3/8in.	-	-	1/2in.	8-32 x 1in. (1)
4	7895-1VB-P	-	Knob	-	-	1in.	-	1 3/8in.	1in.	8-32 x 1in. (1)
5	7898-1VB-P	3in.	Pull	4 5/8in.	7/8in.	1 3/8in.	-	-	1/2in.	8-32 x 1in. (2)
6	7890-1VB-P	96mm	Pull	4 1 5/8in.	1 1/8in.	1 1/8in.	5/8in.	-	1 5/8in.	8-32 x 1in. (2)
7	7900-1VB-P	3in.	Pull	4 1 1/8in.	3/8in.	1 3/8in.	4/8in.	-	3/4in.	8-32 x 1in. (2)
8	8016-VB-P	-	Hook	4in.	3/8in.	3 1/8in.	-	-	1 1/8in.	5/8in. Wood (4)
9	7897-1VB-P	-	Knob	1 7/8in.	1 1/8in.	1in.	-	-	7/8in.	8-32 x 1in. (1)
10	+7883-1VB-P	128mm	Pull	5 1 1/8in.	5/8in.	1 1/4in.	5/8in.	-	5/8in.	8-32 x 1in. (2)
11	7901-1VB-P	3in.	Pull	3 3/8in.	3/8in.	1 1/4in.	-	-	3/8in.	8-32 x 1in. (2)
12	7876-1VB-P	3in.	Cup Pull	4 5/8in.	1 3/8in.	1in.	5/8in.	-	-	8-32 x 1in. (2)
13	7886-1VB-P	64mm	Cup Pull	4 1/8in.	1 1/4in.	1in.	7/8in.	-	-	8-32 x 1in. (2)
14	7878-1VB-P	-	Knob	1 5/8in.	7/8in.	1 1/4in.	-	-	5/8in.	8-32 x 1in. (1)
15	7899-1VB-P	-	Knob	-	-	1 1/8in.	-	1 1/4in.	3/4in.	8-32 x 1in. (1)

+2 Additional 8-32 x 1 3/4in. break-off screws provided.





TRADITIONAL

An *uncomplicated* design with rounded ends make for a *soft* appearance.

TIMELESS CHARM



# VILLAGE

## TIMELESS CHARM - *Traditional Style*

Collection Featured in Brushed Nickel

Scan the QR Code above for more details!



Appliance Pull  
Also Available

256mm CC

### Village Available Finishes, Sizes & Part Numbers

The pulls of this collection feature a flat underside on the handle.



BRUSHED NICKEL

256mm CC	2083-1BPN-P
160mm CC	2081-1BPN-P
128mm CC	2079-1BPN-P
96mm CC	2077-1BPN-P
3in. CC	2075-1BPN-P



VERONA BRONZE

256mm CC	2084-10VB-P
160mm CC	2082-10VB-P
128mm CC	2080-10VB-P
96mm CC	2078-10VB-P
3in. CC	2076-10VB-P

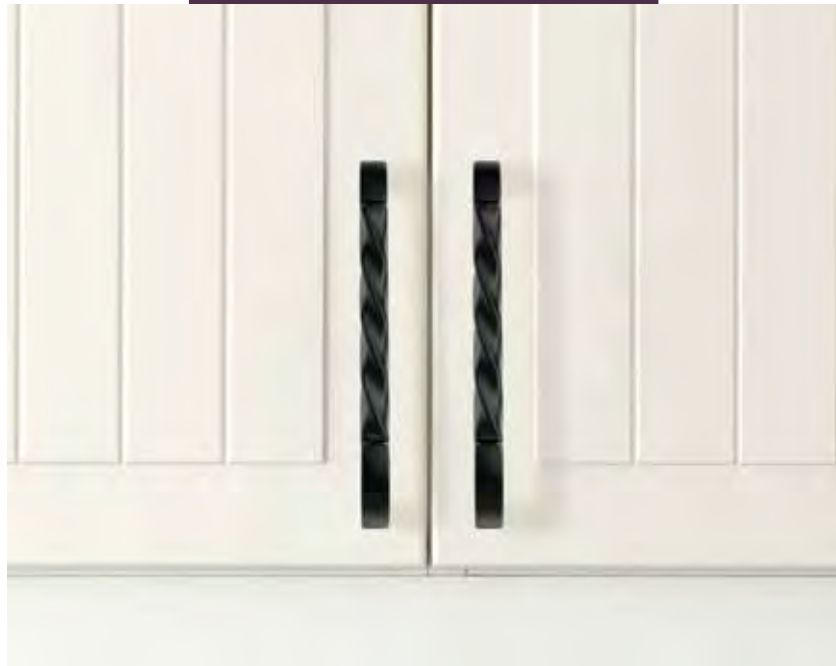
### Village Product Data

CC	Product Type	Length	Width	Height/Projection	Hand Clearance	Diameter	Base	Tap/Screws (Qty)
*256mm	Appliance Pull	12 3/16in.	1 1/16in.	1 1/16in.	1 1/2in.	-	1 1/16in.	10-24 x 1in. (2)
160mm	Pull	8 1/8in.	5/16in.	1 1/8in.	2 5/32in.	-	1 3/16in.	8-32 x 1in. (2)
128mm	Pull	6 7/8in.	5/16in.	1 1/8in.	3/4in.	-	1 3/16in.	8-32 x 1in. (2)
96mm	Pull	5 3/8in.	5/16in.	1 1/8in.	1 1/16in.	-	1 3/16in.	8-32 x 1in. (2)
3in.	Pull	4 3/8in.	5/16in.	1 1/8in.	4 3/4in.	-	1 1/16in.	8-32 x 1in. (2)

\*Product not shown, please visit [www.BerensonHardware.com](http://www.BerensonHardware.com) to view images and details.

CC = center to center | images of parts are not shown at 100% scale

Featuring the Rhapsody Collection in Black



# ARTISAN INSPIRED

## CRAFTSMAN STYLE

Craft an artistic & unique look by using distinct hardware designs that excite the eye.



# ART NOUVEAU

## ARTISAN INSPIRED - Craftsman Style

Collection Featured in Vintage Nickel

Scan the QR Code above for more details!



### Art Nouveau Available Finishes, Sizes & Part Numbers

The pulls of this collection feature a semi-curved underside on the handle.



VERONA BRONZE

128mm CC	4014-10VB-P
96mm CC	4011-10VB-P
3in. & 3 1/2 in. CC	4134-10VB-P
Knob	4017-10VB-P



VINTAGE NICKEL

128mm CC	4015-1VTN-P
96mm CC	4012-1VTN-P
3in. & 3 1/2 in. CC	4135-1VTN-P
Knob	4018-1VTN-P

### Art Nouveau Product Data

CC	Product Type	Length	Width	Height/Projection	Hand Clearance	Diameter	Base	Tap/Screws (Qty)
*128mm	Pull	7 1/4 in.	1 in.	1 3/4 in.	1 7/16 in.	-	1 3/16 in.	8-32 x 1 in. (2)
96mm	Pull	5 1/4 in.	1 1/16 in.	1 5/8 in.	1 1/8 in.	-	5/16 in.	8-32 x 1 in. (2)
3in. & 3 1/2 in.	Pull	5 1/4 in.	1 1/16 in.	1 1/4 in.	1 7/16 in.	-	9/16 in.	8-32 x 1 in. (2)
-	Knob	-	-	1 1/8 in.	5/16 in.	1 3/16 in.	5/16 in.	8-32 x 1 in. (1)

\*The 128mm CC pull features a wider width that adds dimension to kitchen and bath designs

# RHAPSODY

## ARTISAN INSPIRED - Craftsman Style

Collection Featured in Black

Scan the QR Code above for more details!



### Rhapsody Available Finishes, Sizes & Part Numbers

The pulls of this collection feature a curved underside on the handle.



BLACK

128mm CC	3040-155-P
96mm CC	3043-155-P
1 Knob	3046-155-P
2 Knob	3049-155-P
3 Knob	3052-155-P
4 Knob	3055-155-P



WEATHERED IRON

128mm CC	3041-1LWI-P
96mm CC	3044-1LWI-P
1 Knob	3047-1LWI-P
2 Knob	3050-1LWI-P
3 Knob	3053-1LWI-P
4 Knob	Not Available



WEATHERED NICKEL

128mm CC	3042-1WN-P
96mm CC	3045-1WN-P
1 Knob	3048-1WN-P
2 Knob	3051-1WN-P
3 Knob	3054-1WN-P
4 Knob	3057-1WN-P

### Rhapsody Product Data

	CC	Product Type	Length	Width	Height/Projection	Hand Clearance	Diameter	Base	Tap/Screws (Qty)
1	-	Knob	2 1/2 in.	1/2 in.	1 1/8 in.	2 1/2 in.	-	3/16 in.	8-32 x 1 in. (1)
2	-	Knob	1 3/8 in.	1 3/16 in.	1 1/4 in.	1 7/32 in.	-	3/16 in.	8-32 x 1 in. (1)
3	-	Knob	-	-	1 in.	2 3/4 in.	1 5/16 in.	3/16 in.	8-32 x 1 in. (1)
4	-	Knob	-	-	1 5/8 in.	1/2 in.	1 1/4 in.	9/16 in.	8-32 x 1 in. (1)
5	128mm	Pull	5 7/8 in.	3/4 in.	1 1/4 in.	5/8 in.	-	3/16 in.	8-32 x 1 in. (2)
6	96mm	Pull	4 3/8 in.	3/4 in.	1 1/4 in.	5/8 in.	-	3/16 in.	8-32 x 1 in. (2)



# APPLIANCE PULLS

Scan the QR Code for more details!

## BENEFITS

Appliance pulls are the key to tying your kitchen together with a harmonious appearance. These pulls are longer and wider cabinet pulls, designed to handle what regular hardware cannot.

They are a convenient choice for tall pantry doors or heavy and wide storage drawers that would otherwise need multiple knobs or pulls. Use them on appliances such as ovens and dishwashers to match the hardware of your cabinets for a streamlined design.

**All of our appliance pulls have a 10-24 tap for a strong and secure fit.** Sizes include 256mm CC, 12in. CC, 320mm CC, 448mm CC, and 18in. CC.

## MERCHANDISING

Our showroom presentation option includes our Appliance Pull display board.

Featured on this board in trending finishes, are our longest appliance pulls from some of our most popular collections.



Appliance Pull Premium Display Board 01 0520-6000-03

See a few of our appliance pulls below, shown true to scale.



256mm CC • Hillcrest



12in. CC • Aspire



320mm CC • Elevate

## COLLECTIONS

The following collections feature an appliance pull option.

Aspire	pg 15
Brookridge	pg 17
Designers' Group Ten	pg 23
Elevate	pg 53
Epoch Edge	pg 55
Forté	pg 32
Hearthstone	pg 85
Hillcrest	pg 87
Meadow	pg 33
Metro	pg 63
Radial Reign	pg 65
Rivet Rebel	pg 37
Subtle Surge	pg 41
Tailored Traditional	pg 91
Vested Interest	pg 93
Village	pg 98

# ADDITIONAL LINES

For Information On Our Additional Lines, Please Contact Sales!

Sales@BerensonHardware.com | 800.333.0578



VALUE

Advantage  
+Plus by Berenson.

HIGH-END

R. Christensen  
by Berenson.

## DETAILS

Advantage Plus by Berenson ensures everyone can complete the design of their beautiful home by offering cabinet hardware at an **affordable price**.

The collections included come in popular and trending finishes: Brushed Nickel, Champagne, Matte Black, Polished Chrome, Verona Bronze, and Weathered Nickel. Coming in a variety of stylish designs including edge pulls and cup pulls, there is something here for everyone.

The 12 value collections featured in this line come in three styles: **contemporary, traditional, and transitional**.

Our assortment of wire pulls can also be found here in Advantage Wire Pulls. They come in a variety of popular finishes as well as four common sizes: 3in., 3 1/2in., 96mm and 4in.



Display boards measure: 11 13/16in. x 15 13/16in. x 1/8in.

## DISPLAY DETAILS

Our Advantage Plus by Berenson display boards are blue in color.

The price code, center to center measurement and part number can be found listed below each part on the display board.

There are **12 boards in the Advantage Plus line**, one for each collection.

## DETAILS

The decorative hardware of R. Christensen by Berenson is crafted to complement the sleek appearance of **contemporary** spaces.

This line includes the Art Tech series, featuring knobs and pulls with clean lines and **smooth surfaces**, that add sophisticated beauty to **minimalist designs**.

Their subtle beauty elevates kitchen and baths to the next level and are available in trending finishes such as Soft Gold and Charcoal Gray, as well popular finishes such as Brushed Nickel and Polished Chrome.

These collections feature a variety of hardware types including edge pulls, drop pulls, hooks and recess pulls. Designs are bold and add an updated take to classic styles.



Display boards measure: 11 13/16in. x 15 13/16in. x 1/8in.

## DISPLAY DETAILS

Our R. Christensen by Berenson display boards are white in color.

A selection of favorite Art Tech collections have been paired together to be featured on 6 stylish display boards.

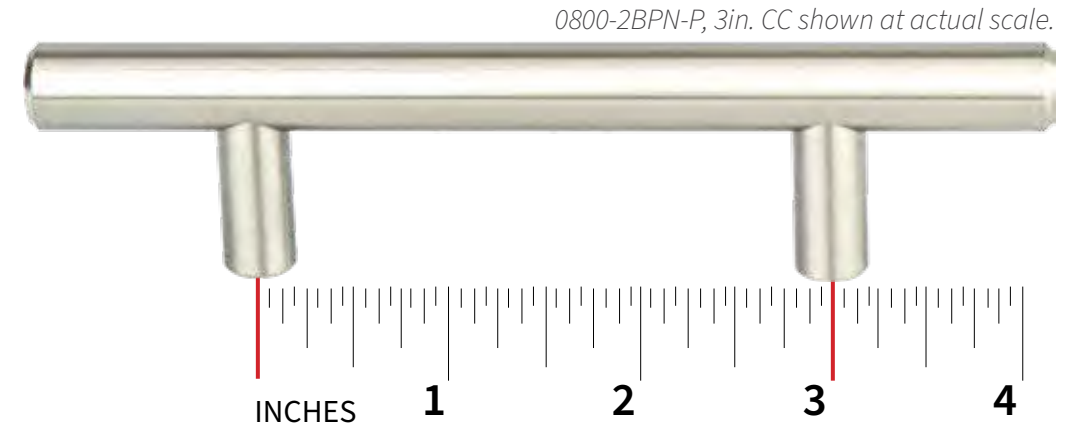
These boards do not feature item numbers on the front and include recent additions Right and Disc.



Featuring the Elevate Collection in Polished Chrome  
 Design and photos by Jennifer Hutton at  
 Grau Design Studio,  
 @JenniferHutton\_Pro

# CC & INSTALLATION GUIDE

Our pulls come in a range of sizes and are measured in either inches or millimeters. To determine the center to center (CC) of a pull, use a ruler to measure the distance between the centers of the screw holes.



0800-2BPN-P, 3in. CC shown at actual scale.

## CC MEASUREMENT CONVERSION

Inches	Millimeters	Inches	Millimeters
1 1/16in.	32mm	8 1/16in.	224mm
2 3/16in.	56mm	10 1/16in.	256mm
2 1/2in.	64mm	11 1/2in.	288mm
3in.	76.2mm	12in.	304.8mm
3 1/2in.	88.9mm	12 1/2in.	320mm
3 23/32in.	96mm	15 1/16in.	384mm
4in.	101.6mm	16 3/16in.	416mm
4 13/32in.	112mm	17 21/32in.	448mm
5 1/16in.	128mm	18in.	457.2mm
6in.	152.4mm	21 1/2in.	544mm
6 5/16in.	160mm	25 7/32in.	640mm
6 21/32in.	169mm	26 23/32in.	672mm
7 1/16in.	192mm	30 7/32in.	768mm



Scan the QR code for to visit our online conversion chart. Quickly find hardware in the size you need!

## INSTALLING DECORATIVE HARDWARE FOR THE FIRST TIME

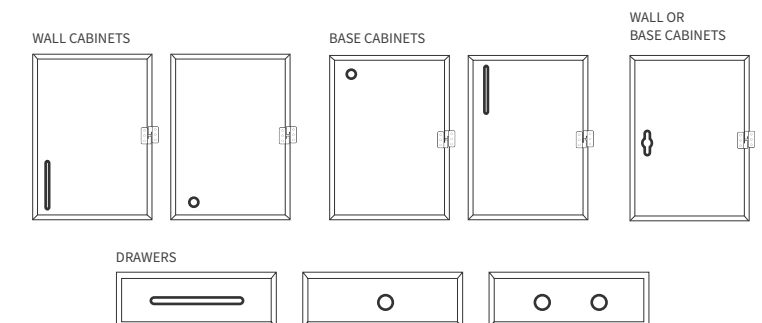
When you have decided where you want your hardware placed, use a ruler or cabinet hardware template to mark the drilling locations.

You'll want the placement to be the same across all cabinets for a consistent look. Once all the locations are marked you are ready to use your 3/16in. drill bit and drill the holes.

### TOOLS REQUIRED:

- ① Ruler or Cabinet Hardware Template
- ② Power Drill

Where you place your hardware on a cabinet is entirely up to you. You can see some traditional placement of hardware to the right.





# DISPLAY BOARD DETAILS

Scan the QR Code for more details!

## DISPLAY BOARD OPTIONS

We offer display boards with and without printed part numbers. You can tell which is which based on the part number for the board itself.

*Customers can request the type of display board that's best for their business.*

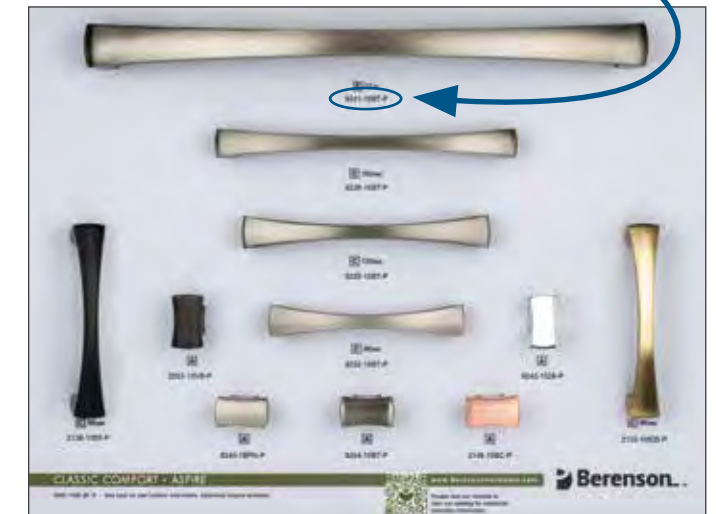
Display boards measure 11 13/16in. x 15 13/16in. x 1/8in.

### -03 = NO PART NUMBERS



0292-7000-03-G • No part numbers printed on front

### -05 = PART NUMBERS



0292-7000-05-G • Part numbers printed on front

## PLANOGRAM STICKERS (POG)

Additional part information can be found on the Planogram (POG) sticker located on the back of Berenson and R. Christensen by Berenson display boards.

- Dots on the POG note the parts that are shown on the front of the board.

Info that can be found on the POG:

- CC Measurement
- Product Type
- Finish
- Part Number
- Price Code

DOMESTIC BLISS			0380-7000-03-G	
CC	Type	Finish	Part No.	Price Code
320mm.	Pull	Brushed Nickel	2356-1BPN-P	E
224mm.	Pull	Brushed Nickel	2352-1BPN-P	D
160mm.	Pull	Brushed Nickel	2348-1BPN-P	D
128mm.	Pull	Brushed Nickel	2343-1BPN-P	C
• 96mm.	Pull	Brushed Nickel	2339-1BPN-P	C
	Knob	Brushed Nickel	2360-1BPN-P	B
• 320mm.	Pull	Modern Brushed Gold	2359-1MDB-P	E
• 224mm.	Pull	Modern Brushed Gold	2355-1MDB-P	D
• 160mm.	Pull	Modern Brushed Gold	2351-1MDB-P	D
• 128mm.	Pull	Modern Brushed Gold	2347-1MDB-P	C
• 96mm.	Pull	Modern Brushed Gold	2342-1MDB-P	C
•	Knob	Modern Brushed Gold	2363-1MDB-P	B
320mm.	Pull	Polished Nickel	2358-1014-P	E
224mm.	Pull	Polished Nickel	2354-1014-P	D
160mm.	Pull	Polished Nickel	2350-1014-P	D
128mm.	Pull	Polished Nickel	2346-1014-P	C
96mm.	Pull	Polished Nickel	2341-1014-P	C
•	Knob	Polished Nickel	2362-1014-P	B
320mm.	Pull	Verona Bronze	2357-10VB-P	E
224mm.	Pull	Verona Bronze	2353-10VB-P	D
160mm.	Pull	Verona Bronze	2349-10VB-P	D
128mm.	Pull	Verona Bronze	2344-10VB-P	C
• 96mm.	Pull	Verona Bronze	2340-10VB-P	C
	Knob	Verona Bronze	2361-10VB-P	B

• Part shown on front of board.

0380-POG-01



# DISPLAY BOARDS - CLASSIC COMFORT



Aspire - pg 15 0292-7000-05-G



Brookridge - pg 17 0541-7000-05-G



Euro Moderno - pg 31 0364-7000-05-G



Forté - pg 32 0241-7000-05-G



Connections - pg 20 0275-7000-05-G



Designers' Group Ten - pg 23 0280-7000-05-G



Meadow - pg 33 0370-7000-05-G



Oasis - pg 36 0293-7000-05-G



Dierdra - pg 25 0322-7000-05-G



Domestic Bliss - pg 29 0380-7000-05-G



Rivet Rebel - pg 37 0564-7000-05-G



Subtle Surge - pg 41 0478-7000-05-G

# DISPLAY BOARDS - CLASSIC COMFORT



Tempo - pg 43

0377-7000-05-G

# DISPLAY BOARDS - UPTOWN APPEAL



Bravo - pg 49

0270-7000-05-G



Elevate - pg 53

0369-7000-05-G



Featuring the Skyline Collection in Modern Brushed Gold



Epoch Edge - pg 55

0479-7000-05-G



Fluidic - pg 58

0314-7000-05-G



Laura - pg 60

0323-7000-05-G



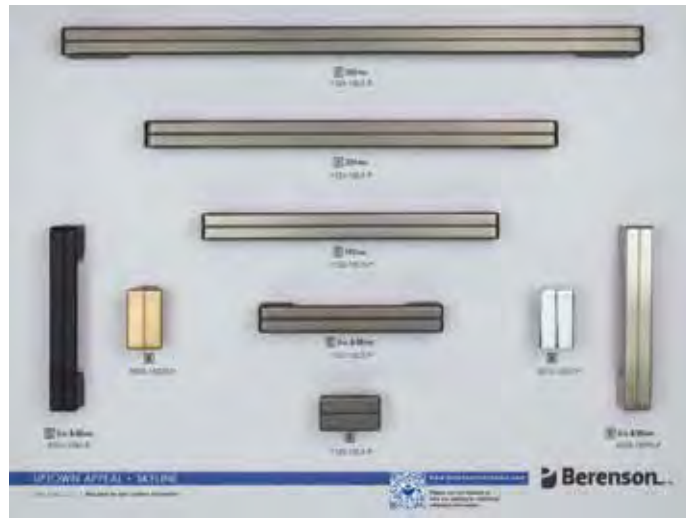
Metro - pg 63

0274-7000-05-G

# DISPLAY BOARDS - *UPTOWN APPEAL*



**Radial Reign** - pg 65 0565-7000-05-G



**Skyline** - pg 67 0291-7000-05-G



**Stainless Steel** - pg 69 0217-70SS-05-G



**Studio** - pg 70 0371-7000-05-G



**Swagger** - pg 71 0378-7000-05-G

# DISPLAY BOARDS - *TIMELESS CHARM*



**American Classics** - pg 75 0214-7000-05-G



**Andante | Euro Traditions** - pg 78 & 81 0360-7000-05-G



**Echo** - pg 80 0295-7000-05-G



**Harmony** - pg 82 0313-7000-05-G



**Hearthstone** - pg 85 0277-7000-05-G



**Hillcrest** - pg 87 0373-7000-05-G

# DISPLAY BOARDS - *TIMELESS CHARM*

# DISPLAY BOARDS - *ARTISAN INSPIRED*



**Prelude** - pg 88 0211-7000-05-G



**Tailored Traditional** - pg 91 0477-7000-05-G



**Art Nouveau** - pg 101 0276-7000-05-G



**Rhapsody** - pg 102 0361-7000-05-G



**Vested Interest** - pg 93 0379-7000-05-G



**Vibrato** - pg 95 0204-70VB-05-G



**Village** - pg 98 0372-7000-05-G



Featuring the Metro Collection in Matte Black  
Design and photos by Jennifer Hutton at  
Grau Design Studio,  
@JenniferHutton\_Pro

# DISPLAY BOARDS – *FEATURED STYLES*



**Black and Gold** 0199-7000-05



**Contemporary Best Sellers - pg 47** 0567-7000-05



**Cup Pulls & Knobs** 0563-7000-05



**Finish Selection - pg 11** 0569-7000-05



**Traditional Best Sellers - pg 73** 0568-7000-05



**Transitional Best Sellers - pg 13** 0566-7000-05

# BEAUTY BOARDS

Beauty boards draw attention and inspire customers to use hardware by Berenson. They are the perfect way to fill your tower and complement your collections with striking imagery.

Each beauty display board measures 11 13/16 in. x 15 13/16 in. x 1/8 in. and has a notch in the bottom to help insert and remove the board from the display.

## BRAND FOCUSED

We offer boards featuring Berenson and Advantage Plus by Berenson product line logos and the Price Code Breakdown.

## ENVIRONMENTAL IMAGE

Beauty boards show customers how Berenson's decorative hardware looks completely installed and in use.



PRICING CODE BEAUTY BOARD

0496-7000-02



SKYLINE BEAUTY BOARD

0500-7000-02



ELEVATE BEAUTY BOARD

0536-7000-02



T-BAR BEAUTY BOARD

0537-7000-02



ADVANTAGE PLUS BEAUTY BOARD

0538-7000-02



BERENSON BEAUTY BOARD

0539-7000-02

**NOTE:** Display board artwork is subject to change at any time and may not reflect the image shown above. Beauty Boards contain printed **IMAGES ONLY. NO HARDWARE INCLUDED ON BEAUTY BOARDS.**



# DISPLAY TOWERS

Scan the QR Code to access the Tower Order Form.

Berenson offers two different size towers for displaying our products, a 12-board option and a 36-board option. Each display tower rotates 360 degrees for easy access and comes with branded headers. Choose a standard selection of display boards or build a custom tower.



## 12-BOARD TOWER

**0012-2000-01**

### WHAT TO KNOW:

Measures 19 3/4in. width by 85 1/4in. height and holds 12 display boards.



## 36-BOARD TOWER

**0011-2000-01**

### WHAT TO KNOW:

Measures 34 7/8in. width by 85 1/4in. height and holds 36 display boards.



# DISPLAY ACCESSORIES

## BRAND HEADERS

Brand headers are available in three options: Berenson, Advantage Plus by Berenson and R. Christensen by Berenson. Each header is double-sided and can also be placed back to back for dual branding. The 12-board display tower has one header slot and the 36-board display tower has three header slots.

Brand headers measure 7 7/8in. x 15 1/4in. x 1/2in.




Berenson Header  
**0512-7000-02**



Advantage Plus Header  
**0513-7000-02**



R. Christensen Header  
**0514-7000-02**



### DISPLAY TOWER SHELF

**0170-0KIT-01**

*Attaches right onto the tower!*

This kit includes the Display Tower Shelf, Display Board Guide, the Price Code Guide, and assembly instructions.

Additional Marketing Materials, such as this catalog or the Take Away Brochure, can also be stored in the shelf.

Visit our YouTube channel **@BerensonHardware** to watch a video on how to install the shelf to your tower!

**For more information or to order contact:**  
**Sales@BerensonHardware.com | 800.333.0578**



Featuring the Laura Collection  
in Vintage Nickel



Featuring the Swagger Collection in Modern Brushed Gold  
Design and photos by Jennifer Hutton at  
Artisan Kitchens and Baths,  
@JenniferHutton\_Pro



## FAQ

Scan the QR Code for more details!

### Where can I see and buy Berenson Hardware on display?

You can purchase Berenson hardware from a variety of sources, including architectural hardware showrooms, kitchen and bath oriented dealers, and internet re-sellers.

To find the retailer nearest to you, visit our website Find a Store page. If you carry Berenson product and would like your business to be listed on our Find a Store page, please contact your sales representative or email us.

### Do you offer an online catalog?

Yes, you can view and download a digital copy of all of our current catalogs on our website, [www.BerensonHardware.com](http://www.BerensonHardware.com). Locate them from our Main Menu under the Support section.

### Is there a minimum order quantity?

There is no minimum order quantity or broken box charge. Berenson will ship any product in any quantity.

### How soon are items shipped after being ordered?

Orders placed before 3:00 PM EST will ship the same day.

*Large orders that must ship by truck will go out the day after the order is placed.*

### Do you offer drop shipments?

Yes, we will ship right to your customer if needed.

### Do your products come with screws and what length are they?

Yes, most hardware includes 8-32 x 1in. machine screws or M4 x 45mm break off screws.

*Appliance pulls come with 10-24 x 1in. machine screws.*

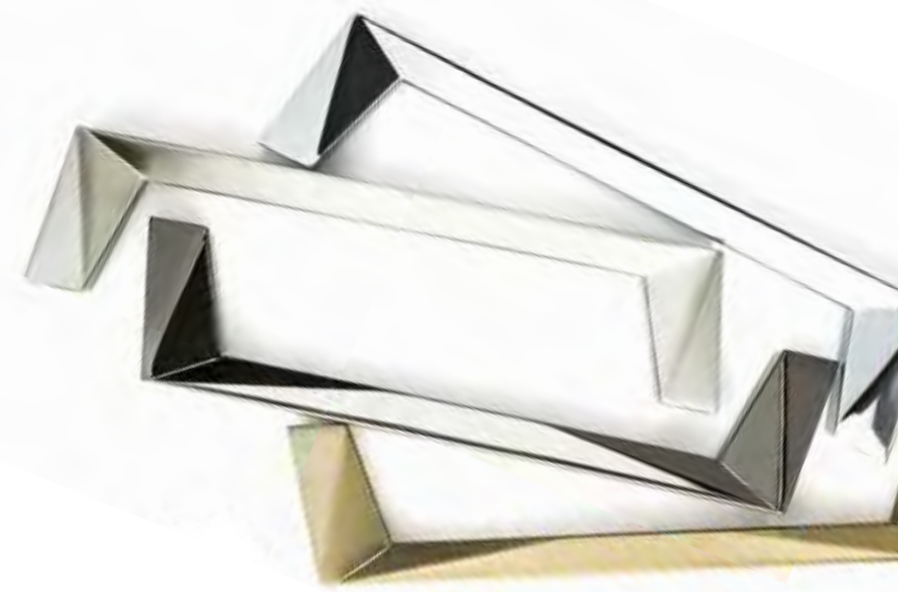
Please see product data tables on collection pages to find out which type of screw comes with each part.

### What is the best way to care for hardware?

Our decorative hardware is best cleaned with warm water, mild soap, and a soft cloth when necessary. Avoid the use of abrasive cleaning products or window cleaner. Over time, the use of such products will result in the removal of the protective coating.

### ADDITIONAL QUESTIONS?

Check our FAQ section on our website, scan the QR code at the top of the page, or email us at [info@berensonhardware.com](mailto:info@berensonhardware.com)







# KEY TO CODES

Scan the QR Code for more details!

## PART NUMBER BREAKDOWN

Parts Are Identified As Follows:

**ITEM #:** Four-digit item code  
(followed by a dash)

**MATERIAL:** One-digit primary material code

**FINISH:** Two-digit code or a character code  
(two or three letters) to distinguish the finish (followed by a dash)

**PACKAGING:** One-letter packaging code



### EXAMPLE

Part Number:

**2368-1MDB-P**

ITEM #

PACKAGING

MATERIAL

FINISH

Description of Above Example:  
Zinc Diecast, Modern Brushed Gold,  
Polybagged w/Mounting Hardware

## KEY TO MATERIAL CODES

- 1 Zinc Diecast (Zamac)
- 2 Steel
- 4 Aluminum
- 9 Other (Stainless Steel or Crystal)

## KEY TO FINISH CODES

See Pages 11-12 for Codes

## KEY TO PACKAGING CODES

- B** Item is supplied in bulk without mounting screws or escutcheon pins. (Mounting hardware ordered separately.)
- C** Item is supplied in a carton with 8-32 x 1 in. or M4 x 45mm break off screws.
- P** Item is individually polybagged with 8-32 x 1 in. screws or other mounting hardware.



## PRICING BREAKDOWN

Scan the QR code for the most updated pricing brackets for codes A-E.

# PART INDEX

Part No.	CC/Type	Page No.
0800-2BPN-P	3in.	44
0801-20VB-P	3in.	44
0802-2BPN-P	96mm	44
0803-20VB-P	96mm	44
0804-2BPN-P	128mm	44
0805-20VB-P	128mm	44
0806-2BPN-P	192mm	44
0807-20VB-P	192mm	44
0808-2BPN-P	256mm	44
0809-20VB-P	256mm	44
0810-2BPN-P	320mm	44
0811-20VB-P	320mm	44
0812-20VB-P	160mm	44
0813-20VB-P	224mm	44
0820-2MDB-P	3in.	44
0821-2MDB-P	96mm	44
0822-2MDB-P	128mm	44
0823-2MDB-P	160mm	44
0824-2MDB-P	192mm	44
0825-2MDB-P	224mm	44
0826-2MDB-P	256mm	44
0828-2MDB-P	320mm	44
0829-2MDB-P	Knob	44
0830-2055-P	3in.	44
0831-2055-P	96mm	44
0832-2055-P	128mm	44
0833-2055-P	160mm	44
0834-2055-P	192mm	44
0835-2055-P	224mm	44
0836-2055-P	256mm	44
0838-2055-P	320mm	44
0839-2055-P	Knob	44
1046-40BC-P	32mm	50
1047-40BC-P	56mm	50
1048-40BC-P	112mm	50
1049-40BC-P	169mm	50

Part No.	CC/Type	Page No.
1051-4ALU-B	Edge Pull	49
1052-4BPN-P	32mm	50
1053-4026-P	32mm	50
1055-40VB-P	32mm	50
1056-4055-P	32mm	50
1057-4BPN-P	56mm	50
1058-4026-P	56mm	50
1059-40VB-P	56mm	50
1060-4055-P	56mm	50
1061-4BPN-P	112mm	50
1062-4026-P	112mm	50
1063-40VB-P	112mm	50
1064-4055-P	112mm	50
1065-4BPN-P	169mm	50
1066-4026-P	169mm	50
1067-40VB-P	169mm	50
1068-4055-P	169mm	50
1069-40SG-P	32mm	50
1070-40SG-P	56mm	50
1071-40SG-P	112mm	50
1072-40SG-P	169mm	50
1073-4GPH-P	32mm	50
1074-4GPH-P	56mm	50
1075-4GPH-P	112mm	50
1076-4GPH-P	169mm	50
1114-1MDB-P	18in.	42
1115-1BPN-P	18in.	42
1116-1014-P	18in.	42
1117-10VB-P	18in.	42
1118-1VTN-P	18in.	42
1119-1055-P	18in.	42
1120-1026-P	320mm	68
1121-1SLT-P	3in. & 96mm	68
1122-1SLT-P	160mm	68
1123-1SLT-P	224mm	68
1124-1SLT-P	320mm	68

Part No.	CC/Type	Page No.
1125-1SLT-P	Knob	68
1126-2BPN-P	160mm	44
1127-2BPN-P	224mm	44
1128-2BPN-P	288mm	46
1129-2BPN-P	384mm	46
1130-2BPN-P	448mm	46
1131-2BPN-P	544mm	46
1132-2BPN-P	640mm	46
1133-2BPN-P	768mm	46
1200-1BPN-P	Knob	56
1201-10VB-P	Knob	56
1202-1026-P	Knob	56
1203-1055-P	Knob	56
1204-1MDB-P	Knob	56
1205-1VTN-P	Knob	56
1206-1BPN-P	96mm	56
1207-10VB-P	96mm	56
1208-1026-P	96mm	56
1209-1055-P	96mm	56
1210-1MDB-P	96mm	56
1211-1VTN-P	96mm	56
1212-1BPN-P	128mm	56
1213-10VB-P	128mm	56
1214-1026-P	128mm	56
1215-1055-P	128mm	56
1216-1MDB-P	128mm	56
1217-1VTN-P	128mm	56
1218-1BPN-P	160mm	56
1219-10VB-P	160mm	56
1220-1026-P	160mm	56
1221-1055-P	160mm	56
1222-1MDB-P	160mm	56
1223-1VTN-P	160mm	56
1224-1BPN-P	224mm	56
1225-10VB-P	224mm	56
1226-1026-P	224mm	56

Part No.	CC/Type	Page No.
1227-1055-P	224mm	56
1228-1MDB-P	224mm	56
1229-1VTN-P	224mm	56
1230-1BPN-P	12in.	56
1231-10VB-P	12in.	56
1232-1026-P	12in.	56
1233-1055-P	12in.	56
1234-1MDB-P	12in.	56
1235-1VTN-P	12in.	56
1236-1BPN-P	Knob	42
1237-10VB-P	Knob	42
1238-1014-P	Knob	42
1239-1055-P	Knob	42
1240-1MDB-P	Knob	42
1241-1VTN-P	Knob	42
1242-1BPN-P	96mm	42
1243-10VB-P	96mm	42
1244-1014-P	96mm	42
1245-1055-P	96mm	42
1246-1MDB-P	96mm	42
1247-1VTN-P	96mm	42
1248-1BPN-P	128mm	42
1249-10VB-P	128mm	42
1250-1014-P	128mm	42
1251-1055-P	128mm	42
1252-1MDB-P	128mm	42
1253-1VTN-P	128mm	42
1254-1BPN-P	160mm	42
1255-10VB-P	160mm	42
1256-1014-P	160mm	42
1257-1055-P	160mm	42
1258-1MDB-P	160mm	42
1259-1VTN-P	160mm	42
1260-1BPN-P	224mm	42
1261-10VB-P	224mm	42
1262-1014-P	224mm	42
1263-1055-P	224mm	42
1264-1MDB-P	224mm	42
1265-1VTN-P	224mm	42

Part No.	CC/Type	Page No.
1266-1BPN-P	12in.	42
1267-10VB-P	12in.	42
1268-1014-P	12in.	42
1269-1055-P	12in.	42
1270-1MDB-P	12in.	42
1271-1VTN-P	12in.	42
1272-1BPN-P	Knob	92
1273-10VB-P	Knob	92
1274-1014-P	Knob	92
1275-1055-P	Knob	92
1276-1MDB-P	Knob	92
1277-1VTN-P	Knob	92
1278-1BPN-P	96mm	92
1279-10VB-P	96mm	92
1280-1014-P	96mm	92
1281-1055-P	96mm	92
1282-1MDB-P	96mm	92
1283-1VTN-P	96mm	92
1284-1BPN-P	128mm	92
1285-10VB-P	128mm	92
1286-1014-P	128mm	92
1287-1055-P	128mm	92
1288-1MDB-P	128mm	92
1289-1VTN-P	128mm	92
1290-1BPN-P	160mm	92
1291-10VB-P	160mm	92
1292-1014-P	160mm	92
1293-1055-P	160mm	92
1294-1MDB-P	160mm	92
1295-1VTN-P	160mm	92
1296-1BPN-P	224mm	92
1297-10VB-P	224mm	92
1298-1014-P	224mm	92
1299-1055-P	224mm	92
1300-1MDB-P	224mm	92
1301-1VTN-P	224mm	92
1302-1BPN-P	12in.	92
1303-10VB-P	12in.	92
1304-1014-P	12in.	92

Part No.	CC/Type	Page No.
1305-1055-P	12in.	92
1306-1MDB-P	12in.	92
1307-1VTN-P	12in.	92
2006-2026-P	320mm	44
2012-2026-P	3in.	44
2013-2026-P	96mm	44
2014-2026-P	128mm	44
2015-2026-P	192mm	44
2016-2026-P	224mm	44
2017-2026-P	256mm	44
2018-20VB-P	Knob	44
2019-2026-P	Knob	44
2020-2BPN-P	Knob	44
2021-90SS-P	128mm	70
2022-90SS-P	160mm	70
2023-90SS-P	192mm	70
2024-90SS-P	224mm	70
2025-90SS-P	256mm	70
2026-90SS-P	288mm	70
2027-90SS-P	576mm	70
2028-2026-P	160mm	44
2029-10VB-P	96mm	16
2030-10VB-P	128mm	16
2031-10VB-P	160mm	16
2032-10VB-P	12in.	16
2033-10VB-P	Knob	16
2034-10VB-P	12in.	86
2035-1BPN-P	12in.	86
2036-1014-P	12in.	23
2037-1WVB-P	12in.	86
2038-1055-P	12in.	86
2039-10VB-P	128mm	86
2040-1BPN-P	128mm	86
2041-1014-P	128mm	23
2042-1WVB-P	128mm	86
2043-1055-P	128mm	86
2044-10VB-P	160mm	86
2045-1BPN-P	160mm	86
2046-1014-P	160mm	23

Part No.	CC/Type	Page No.
2047-1WVB-P	160mm	86
2048-1055-P	160mm	86
2049-1BPN-P	96mm	87
2055-1FE-P	Knob	76
2068-10VB-P	96mm	87
2069-1BPN-P	128mm	87
2070-10VB-P	128mm	87
2071-1BPN-P	160mm	87
2072-10VB-P	160mm	87
2073-1BPN-P	256mm	87
2074-10VB-P	256mm	87
2075-1BPN-P	3in.	98
2076-10VB-P	3in.	98
2077-1BPN-P	96mm	98
2078-10VB-P	96mm	98
2079-1BPN-P	128mm	98
2080-10VB-P	128mm	98
2081-1BPN-P	160mm	98
2082-10VB-P	160mm	98
2083-1BPN-P	256mm	98
2084-10VB-P	256mm	98
2085-4BPN-P	96mm	54
2086-40VB-P	96mm	54
2087-4BPN-P	128mm	54
2088-40VB-P	128mm	54
2089-4BPN-P	160mm	54
2090-40VB-P	160mm	54
2091-4BPN-P	256mm	54
2092-40VB-P	256mm	54
2093-4BPN-P	320mm	54
2094-40VB-P	320mm	54
2095-4BPN-P	Knob	54
2096-40VB-P	Knob	54
2097-4BPN-P	96mm	34
2098-40VB-P	96mm	34
2099-4BPN-P	128mm	34
2100-40VB-P	18in.	54
2101-4BPN-P	18in.	54

Part No.	CC/Type	Page No.
2102-40SG-P	96mm	54
2103-40SG-P	128mm	54
2104-40SG-P	160mm	54
2105-40SG-P	256mm	54
2106-40SG-P	320mm	54
2107-40SG-P	18in.	54
2108-40SG-P	Knob	54
2109-4GPH-P	96mm	54
2110-4GPH-P	128mm	54
2111-4GPH-P	160mm	54
2112-4GPH-P	256mm	54
2113-4GPH-P	320mm	54
2114-4GPH-P	18in.	54
2115-4GPH-P	Knob	54
2116-4055-P	96mm	54
2117-4055-P	128mm	54
2118-4055-P	160mm	54
2119-4055-P	256mm	54
2120-4055-P	320mm	54
2121-4055-P	18in.	54
2122-4055-P	Knob	54
2123-4026-P	96mm	54
2124-4026-P	128mm	54
2125-4026-P	160mm	54
2126-4026-P	256mm	54
2127-4026-P	320mm	54
2128-4026-P	18in.	54
2129-4026-P	Knob	54
2130-1MDB-P	96mm	16
2131-1MDB-P	128mm	16
2132-1MDB-P	160mm	16
2133-1MDB-P	12in.	16
2134-1MDB-P	18in.	16
2135-1MDB-P	Knob	16
2136-1055-P	96mm	16
2137-1055-P	128mm	16
2138-1055-P	160mm	16
2139-1055-P	12in.	16

Part No.	CC/Type	Page No.
2140-1055-P	18in.	16
2141-1055-P	Knob	16
2142-10BC-P	96mm	16
2143-10BC-P	128mm	16
2144-10BC-P	160mm	16
2145-10BC-P	12in.	16
2146-10BC-P	Knob	16
2147-1026-P	18in.	16
2148-1BPN-P	18in.	16
2149-10BT-P	18in.	16
2150-10VB-P	18in.	16
2151-1MDB-P	3in.	86
2152-1MDB-P	96mm	86
2153-1MDB-P	128mm	86
2154-1MDB-P	160mm	86
2155-1MDB-P	6in.	86
2156-1MDB-P	12in.	86
2157-1MDB-P	18in.	86
2158-1MDB-P	Knob	86
2159-1VTN-P	3in.	86
2160-1VTN-P	96mm	86
2161-1VTN-P	128mm	86
2162-1VTN-P	160mm	86
2163-1VTN-P	6in.	86
2164-1VTN-P	12in.	86
2165-1VTN-P	18in.	86
2166-1VTN-P	Knob	86
2167-10VB-P	18in.	86
2168-1BPN-P	18in.	86
2169-1055-P	18in.	86
2172-1BPN-P	Knob	54
2173-10SG-P	Knob	54
2174-1GPH-P	Knob	54
2175-1055-P	Knob	54
2176-1026-P	Knob	54
2177-10VB-P	Knob	54
2273-40SG-P	96mm	34
2274-40SG-P	128mm	34

Part No.	CC/Type	Page No.
2275-40SG-P	160mm	34
2276-40SG-P	256mm	34
2277-40SG-P	320mm	34
2278-40SG-P	448mm	34
2279-40SG-P	Knob	34
2280-4GPH-P	96mm	34
2281-4GPH-P	128mm	34
2282-4GPH-P	160mm	34
2283-4GPH-P	256mm	34
2284-4GPH-P	320mm	34
2285-4GPH-P	448mm	34
2286-4GPH-P	Knob	34
2287-4055-P	96mm	34
2288-4055-P	128mm	34
2289-4055-P	160mm	34
2290-4055-P	256mm	34
2291-4055-P	320mm	34
2292-4055-P	448mm	34
2293-4055-P	Knob	34
2294-4026-P	96mm	34
2295-4026-P	128mm	34
2296-4026-P	160mm	34
2297-4026-P	256mm	34
2298-4026-P	320mm	34
2299-4026-P	448mm	34
2300-4026-P	Knob	34
2301-40VB-P	448mm	34
2302-4BPN-P	448mm	34
2303-40VB-P	128mm	34
2304-4BPN-P	160mm	34
2305-40VB-P	160mm	34
2306-4BPN-P	256mm	34
2307-40VB-P	256mm	34
2308-4BPN-P	320mm	34
2309-40VB-P	320mm	34
2310-1BPN-P	Knob	34
2311-10VB-P	Knob	34
2312-1BPN-P	128mm	72

Part No.	CC/Type	Page No.
2313-1026-P	128mm	72
2314-1098-P	128mm	72
2315-1BPN-P	160mm	72
2316-1026-P	160mm	72
2317-1098-P	160mm	72
2318-1BPN-P	224mm	72
2319-1026-P	224mm	72
2320-1098-P	224mm	72
2321-1BPN-P	320mm	72
2322-1026-P	320mm	72
2323-1098-P	320mm	72
2324-1BPN-P	Knob	72
2325-1026-P	Knob	72
2326-1098-P	Knob	72
2327-1BPN-P	96mm	94
2328-10VB-P	96mm	94
2329-1BPN-P	128mm	94
2330-10VB-P	128mm	94
2331-1BPN-P	160mm	94
2332-10VB-P	160mm	94
2333-1BPN-P	224mm	94
2334-10VB-P	224mm	94
2335-1BPN-P	12in.	94
2336-10VB-P	12in.	94
2337-1BPN-P	Knob	94
2338-10VB-P	Knob	94
2339-1BPN-P	96mm	30
2340-10VB-P	96mm	30
2341-1014-P	96mm	30
2342-1MDB-P	96mm	30
2343-1BPN-P	128mm	30
2344-10VB-P	128mm	30
2346-1014-P	128mm	30
2347-1MDB-P	128mm	30
2348-1BPN-P	160mm	30
2349-10VB-P	160mm	30
2350-1014-P	160mm	30
2351-1MDB-P	160mm	30

Part No.	CC/Type	Page No.
2352-1BPN-P	224mm	30
2353-10VB-P	224mm	30
2354-1014-P	224mm	30
2355-1MDB-P	224mm	30
2356-1BPN-P	320mm	30
2357-10VB-P	320mm	30
2358-1014-P	320mm	30
2359-1MDB-P	320mm	30
2360-1BPN-P	Knob	30
2361-10VB-P	Knob	30
2362-1014-P	Knob	30
2363-1MDB-P	Knob	30
2364-1MDB-P	128mm	72
2365-1MDB-P	160mm	72
2366-1MDB-P	224mm	72
2367-1MDB-P	320mm	72
2368-1MDB-P	Knob	72
2369-1VTN-P	96mm	94
2370-1VTN-P	128mm	94
2371-1VTN-P	160mm	94
2372-1VTN-P	224mm	94
2373-1VTN-P	12in.	94
2374-1VTN-P	Knob	94
2385-1098-P	96mm	72
2386-1BPN-P	96mm	72
2387-1MDB-P	96mm	72
2388-1026-P	96mm	72
2389-1SLT-P	Knob	72
2390-1SLT-P	96mm	72
2391-1SLT-P	128mm	72
2392-1SLT-P	160mm	72
2393-1SLT-P	224mm	72
2394-1055-P	Knob	72
2395-1055-P	96mm	72
2396-1055-P	128mm	72
2397-1055-P	160mm	72
2398-1055-P	224mm	72
2399-1055-P	Knob	30

Part No.	CC/Type	Page No.
2400-1055-P	96mm	30
2401-1055-P	128mm	30
2402-1055-P	160mm	30
2403-1SLT-P	Knob	30
2404-1SLT-P	96mm	30
2405-1SLT-P	128mm	30
2406-1SLT-P	160mm	30
2407-1SLT-P	224mm	30
2408-1055-P	320mm	30
2409-1055-P	224mm	30
2410-1055-P	320mm	30
2411-1055-P	320mm	72
2412-1SLT-P	320mm	72
2615-1BPN-P	96mm	18
2616-1055-P	96mm	18
2617-10VB-P	96mm	18
2619-MDB-P	96mm	18
2620-1BPN-P	128mm	18
2621-1055-P	128mm	18
2622-10VB-P	128mm	18
2624-1MDB-P	128mm	18
2625-1BPN-P	160mm	18
2626-1055-P	160mm	18
2627-10VB-P	160mm	18
2629-1MDB-P	160mm	18
2630-1BPN-P	224mm	18
2631-1055-P	224mm	18
2632-10VB-P	224mm	18
2634-1MDB-P	224mm	18
2635-1BPN-P	12in.	18
2636-1055-P	12in.	18
2637-10VB-P	12in.	18
2639-1MDB-P	12in.	18
2640-1BPN-P	Knob	18
2641-1055-P	Knob	18
2642-10VB-P	Knob	18
2644-1MDB-P	Knob	18
2645-1BPN-P	Knob	18

Part No.	CC/Type	Page No.
2646-1055-P	Knob	18
2647-10VB-P	Knob	18
2649-1MDB-P	Knob	18
2650-1026-P	96mm	18
2651-1026-P	128mm	18
2652-1026-P	160mm	18
2653-1026-P	224mm	18
2654-1026-P	12in.	18
2655-1026-P	Knob	18
2656-1026-P	Knob	18
2920-1BPN-P	Knob	81
2921-1BBN-P	Knob	81
2923-1BAC-P	Knob	81
2924-1BAP-P	Knob	81
2927-155-P	Knob	81
2928-1FE-P	Knob	81
2930-1BPN-P	96mm	81
2931-1BBN-P	96mm	81
2933-1BAC-P	96mm	81
2934-1BAP-P	96mm	81
2937-155-P	96mm	81
2938-1FE-P	96mm	81
3008-1DBZ-P	128mm	78
3009-1DBZ-P	64mm	78
3011-1AP-P	128mm	78
3012-1AP-P	64mm	78
3014-1BPN-P	96mm	78
3040-155-P	128mm	102
3041-1LWI-P	128mm	102
3042-1WN-P	128mm	102
3043-155-P	96mm	102
3044-1LWI-P	96mm	102
3045-1WN-P	96mm	102
3046-155-P	Knob	102
3047-1LWI-P	Knob	102
3048-1WN-P	Knob	102
3049-155-P	Knob	102
3050-1LWI-P	Knob	102

Part No.	CC/Type	Page No.
3051-1WN-P	Knob	102
3052-155-P	Knob	102
3053-1LWI-P	Knob	102
3054-1WN-P	Knob	102
3055-155-P	Knob	102
3057-1WN-P	Knob	102
4001-1VTN-P	3in.	20
4002-1055-P	3in.	20
4003-10VB-P	3in.	20
4004-1VTN-P	160mm	20
4005-1055-P	160mm	20
4006-10VB-P	160mm	20
4007-1VTN-P	Knob	20
4008-1055-P	Knob	20
4009-10VB-P	Knob	20
4011-10VB-P	96mm	101
4012-1VTN-P	96mm	101
4014-10VB-P	128mm	101
4015-1VTN-P	128mm	101
4017-10VB-P	Knob	101
4018-1VTN-P	Knob	101
4056-1BPN-P	96mm	26
4057-10VB-P	96mm	26
4058-10WN-P	96mm	26
4060-1ORB-P	96mm	26
4061-1BPN-P	Knob	26
4062-10VB-P	Knob	26
4063-10VB-P	3in.	86
4064-1BPN-P	3in.	86
4065-10WN-P	Knob	26
4067-1WVB-P	3in.	86
4068-1055-P	3in.	86
4069-10VB-P	96mm	86
4070-1BPN-P	96mm	86
4071-1ORB-P	Knob	26
4072-1BPN-P	96mm	60
4073-1WVB-P	96mm	86
4074-1055-P	96mm	86

Part No.	CC/Type	Page No.
4075-10VB-P	6in.	86
4076-1BPN-P	6in.	86
4077-1BPN-P	128mm	60
4079-1WVB-P	6in.	86
4080-1055-P	6in.	86
4081-10VB-P	Knob	86
4083-1BPN-P	Knob	86
4084-1026-P	96mm	60
4085-1WVB-P	Knob	86
4086-1055-P	Knob	86
4087-1026-P	128mm	60
4088-1BPN-P	Knob	60
4090-1026-P	Knob	60
4107-1014-P	96mm	26
4108-1BPN-P	96mm	64
4109-1026-P	96mm	64
4110-1014-P	Knob	26
4111-1055-P	96mm	64
4113-1BPN-P	128mm	64
4114-1026-P	128mm	64
4116-1055-P	128mm	64
4118-1BPN-P	160mm	64
4119-1026-P	160mm	64
4121-1055-P	160mm	64
4122-1BPN-P	Knob	64
4124-1026-P	Knob	64
4126-1055-P	Knob	64
4130-1VTN-P	96mm	20
4131-1055-P	96mm	20
4132-10VB-P	96mm	20
4134-10VB-P	3in. & 3½in.	101
4135-1VTN-P	3in. & 3½in.	101
4139-1014-P	3in.	23
4140-1014-P	96mm	23
4141-1014-P	6in.	23
4142-1014-P	Knob	23
4143-1014-P	Knob	23
4144-1014-P	96mm	23

Part No.	CC/Type	Page No.
4145-1014-P	Knob	23
4146-1014-P	3in.	23
4147-1014-P	4in.	23
4148-1014-P	3in.	23
4149-1014-P	6in.	23
4150-1014-P	Knob	23
4152-1014-P	Knob	23
4153-1014-P	96mm	23
4154-1014-P	18in.	23
4180-10PC-P	96mm	64
4181-10PC-P	128mm	64
4182-10PC-P	160mm	64
4183-10PC-P	224mm	64
4184-10PC-P	320mm	64
4185-10PC-P	Knob	64
5024-4BPN-P	Knob	66
5025-4BPN-P	96mm	66
5026-4BPN-P	128mm	66
5027-4BPN-P	160mm	66
5028-4BPN-P	224mm	66
5029-4BPN-P	12in.	66
5030-4026-P	Knob	66
5031-4026-P	96mm	66
5032-4026-P	128mm	66
5033-4026-P	160mm	66
5034-4026-P	224mm	66
5035-4026-P	12in.	66
5036-4055-P	Knob	66
5037-4055-P	96mm	66
5038-4055-P	128mm	66
5039-4055-P	160mm	66
5040-4055-P	224mm	66
5041-4055-P	12in.	66
5042-4SLT-P	Knob	66
5043-4SLT-P	96mm	66
5044-4SLT-P	128mm	66
5045-4SLT-P	160mm	66
5046-4SLT-P	224mm	66

Part No.	CC/Type	Page No.
5047-4SLT-P	12in.	66
5048-4MDB-P	Knob	66
5049-4MDB-P	96mm	66
5050-4MDB-P	128mm	66
5051-4MDB-P	160mm	66
5052-4MDB-P	224mm	66
5053-4MDB-P	12in.	66
5054-455MDB-P	Knob	66
5055-455MDB-P	96mm	66
5056-455MDB-P	128mm	66
5057-455MDB-P	160mm	66
5058-455MDB-P	224mm	66
5059-455MDB-P	12in.	66
5060-455BPN-P	Knob	66
5061-455BPN-P	96mm	66
5062-455BPN-P	128mm	66
5063-455BPN-P	160mm	66
5064-455BPN-P	224mm	66
5065-455BPN-P	12in.	66
5066-4BPN55-P	Knob	66
5067-4BPN55-P	96mm	66
5068-4BPN55-P	128mm	66
5069-4BPN55-P	160mm	66
5070-4BPN55-P	224mm	66
5071-4BPN55-P	12in.	66
5072-4098-P	Knob	66
5073-4098-P	96mm	66
5074-4098-P	128mm	66
5075-4098-P	160mm	66
5076-4098-P	224mm	66
5077-4098-P	12in.	66
5078-4BPN-P	Knob	38
5079-4BPN-P	96mm	38
5080-4BPN-P	128mm	38
5081-4BPN-P	160mm	38
5082-4BPN-P	224mm	38
5083-4BPN-P	12in.	38
5084-4026-P	Knob	38

Part No.	CC/Type	Page No.
5085-4026-P	96mm	38
5086-4026-P	128mm	38
5087-4026-P	160mm	38
5088-4026-P	224mm	38
5089-4026-P	12in.	38
5090-4055-P	Knob	38
5091-4055-P	96mm	38
5092-4055-P	128mm	38
5093-4055-P	160mm	38
5094-4055-P	224mm	38
5095-4055-P	12in.	38
5096-4SLT-P	Knob	38
5097-4SLT-P	96mm	38
5098-4SLT-P	128mm	38
5099-4SLT-P	160mm	38
5100-4SLT-P	224mm	38
5101-4SLT-P	12in.	38
5102-4MDB-P	Knob	38
5103-4MDB-P	96mm	38
5104-4MDB-P	128mm	38
5105-4MDB-P	160mm	38
5106-4MDB-P	224mm	38
5107-4MDB-P	12in.	38
5108-455MDB-P	Knob	38
5109-455MDB-P	96mm	38
5110-455MDB-P	128mm	38
5111-455MDB-P	160mm	38
5112-455MDB-P	224mm	38
5113-455MDB-P	12in.	38
5114-455BPN-P	Knob	38
5115-455BPN-P	96mm	38
5116-455BPN-P	128mm	38
5117-455BPN-P	160mm	38
5118-455BPN-P	224mm	38
5119-455BPN-P	12in.	38
5120-4BPN55-P	Knob	38
5121-4BPN55-P	96mm	38
5122-4BPN55-P	128mm	38

Part No.	CC/Type	Page No.
5123-4BPN55-P	160mm	38
5124-4BPN55-P	224mm	38
5125-4BPN55-P	12in.	38
5126-4SLT55-P	Knob	38
5127-4SLT55-P	96mm	38
5128-4SLT55-P	128mm	38
5129-4SLT55-P	160mm	38
5130-4SLT55-P	224mm	38
5131-4SLT55-P	12in.	38
7067-9SS-C	672mm	69
7068-9SS-C	128mm	69
7069-9SS-C	160mm	69
7070-9SS-C	224mm	69
7071-9SS-C	288mm	69
7072-9SS-C	384mm	69
7073-9SS-C	448mm	69
7074-9SS-C	96mm	69
7075-9SS-C	96mm	69
7076-9SS-C	128mm	69
7077-9SS-C	288mm	69
7078-9SS-C	Knob	69
7079-9SS-C	Knob	69
7876-1VB-P	3in.	95
7878-1VB-P	Knob	95
7881-1BPN-P	128mm	78
7883-1VB-P	128mm	95
7884-1BPN-P	64mm	78
7886-1VB-P	64mm	95
7888-1AP-P	96mm	78
7889-1DBZ-P	96mm	78
7890-1VB-P	96mm	95
7891-1BPN-P	Knob	78
7893-1AP-P	Knob	78
7894-1DBZ-P	Knob	78
7895-1VB-P	Knob	95
7897-1VB-P	Knob	95
7898-1VB-P	3in.	95
7899-1VB-P	Knob	95

Part No.	CC/Type	Page No.
7900-1VB-P	3in.	95
7901-1VB-P	3in.	95
7904-1VB-P	128mm	95
7905-1VB-P	96mm	95
7906-1VB-P	Knob	95
8010-03-P	Hook	88
8011-26-P	Hook	88
8012-BPN-P	Hook	88
8013-WN-P	Hook	88
8014-55-P	Hook	88
8015-ORB-P	Hook	88
8016-VB-P	Hook	88 & 95
8017-LWI-P	Hook	88
8267-1BPN-P	6in.	32
8268-1VB-P	6in.	32
8269-1ORB-P	6in.	32
8270-1WN-P	6in.	32
8273-1BPN-P	4in.	32
8274-1VB-P	4in.	32
8276-1WN-P	4in.	32
8279-1BPN-P	Knob	32
8280-1VB-P	Knob	32
8281-1ORB-P	Knob	32
8282-1WN-P	Knob	32
8285-1BPN-P	Knob	32
8286-1VB-P	Knob	32
8287-1ORB-P	Knob	32
8288-1WN-P	Knob	32
8297-1BPN-P	18in.	32
8298-1VB-P	18in.	32
8299-1ORB-P	18in.	32
8300-1WN-P	18in.	32
9079-1BPN-P	Knob	76
9200-1BPN-P	3in. & 96mm	68
9201-1026-P	3in. & 96mm	68
9202-1055-P	3in. & 96mm	68
9203-1BPN-P	160mm	68
9204-1026-P	160mm	68

Part No.	CC/Type	Page No.
9205-1055-P	160mm	68
9206-1BPN-P	224mm	68
9207-1026-P	224mm	68
9208-1055-P	224mm	68
9209-1BPN-P	Knob	68
9210-1026-P	Knob	68
9211-1055-P	Knob	68
9221-1ORB-P	3in.	80
9222-1BPN-P	3in.	80
9223-10VB-P	3in.	80
9224-1ORB-P	96mm	80
9225-1BPN-P	96mm	80
9226-10VB-P	96mm	80
9227-1ORB-P	Knob	80
9228-1BPN-P	Knob	80
9229-10VB-P	Knob	80
9230-1026-P	96mm	16
9231-1BPN-P	96mm	16
9232-10BT-P	96mm	16
9233-1026-P	128mm	16
9234-1BPN-P	128mm	16
9235-10BT-P	128mm	16
9236-1026-P	160mm	16
9237-1BPN-P	160mm	16
9238-10BT-P	160mm	16
9239-1026-P	12in.	16
9240-1BPN-P	12in.	16
9241-10BT-P	12in.	16
9242-1026-P	Knob	16
9243-1BPN-P	Knob	16
9244-10BT-P	Knob	16
9245-1ORB-P	96mm	36
9246-1BPN-P	96mm	36
9247-10BT-P	96mm	36
9248-1ORB-P	128mm	36
9249-1BPN-P	128mm	36
9250-10BT-P	128mm	36
9251-1ORB-P	160mm	36

Part No.	CC/Type	Page No.
9252-1BPN-P	160mm	36
9253-10BT-P	160mm	36
9254-1ORB-P	Knob	36
9255-1BPN-P	Knob	36
9256-10BT-P	Knob	36
9257-1014-P	3in.	80
9258-1014-P	96mm	80
9259-1014-P	Knob	80
9260-1055-P	3in.	80
9261-1055-P	96mm	80
9262-1055-P	Knob	80
9436-10WN-P	3in.	82
9437-10VB-P	3in.	82
9438-1BPN-P	3in.	82
9439-1055-P	96mm	58
9440-1055-P	128mm	58
9441-1055-P	Knob	58
9442-10WN-P	96mm	82
9443-10VB-P	96mm	82
9444-1BPN-P	96mm	82
9448-10WN-P	128mm	82
9449-10VB-P	128mm	82
9450-1BPN-P	128mm	82
9454-10WN-P	160mm	82
9455-10VB-P	160mm	82
9456-1BPN-P	160mm	82
9460-10WN-P	Knob	82
9461-10VB-P	Knob	82
9462-1BPN-P	Knob	82
9475-1026-P	96mm	58
9476-1BPN-P	96mm	58
9477-1026-P	128mm	58
9478-1BPN-P	128mm	58
9479-1026-P	Knob	58
9480-1BPN-P	Knob	58
9562-1BPN-P	160mm	26
9564-1BPN-P	224mm	26
9565-1ORB-P	160mm	26

Part No.	CC/Type	Page No.
9566-1ORB-P	224mm	26
9567-1014-P	160mm	26
9568-1014-P	224mm	26
9569-10VB-P	160mm	26
9576-1VTN-P	3in.	82
9577-1VTN-P	96mm	82
9578-1VTN-P	128mm	82
9579-1VTN-P	160mm	82
9580-1VTN-P	Knob	82
9710-1BPN-P	64mm	31
9711-1BAC-P	64mm	31
9712-1BBN-P	64mm	31
9713-1BAB-P	64mm	31
9718-1BPN-P	96mm	31
9719-1BAC-P	96mm	31
9720-1BBN-P	96mm	31
9721-1BAB-P	96mm	31
9722-1BAC-P	Knob	31
9723-1BBN-P	Knob	31
9724-1BAB-P	Knob	31
9805-10VB-P	224mm	26
9806-1VTN-P	96mm	26
9807-1VTN-P	160mm	26
9808-1VTN-P	224mm	26
9809-1VTN-P	Knob	26
9810-10WN-P	160mm	26
9811-10WN-P	224mm	26
9812-1BPN-P	160mm	60
9813-1BPN-P	224mm	60
9814-1MDB-P	96mm	60
9815-1MDB-P	128mm	60
9816-1MDB-P	160mm	60
9817-1MDB-P	224mm	60
9818-1MDB-P	Knob	60
9819-1026-P	160mm	60
9820-1026-P	224mm	60
9821-1VTN-P	96mm	60
9822-1VTN-P	128mm	60





2495 Main Street, Suite 111 Buffalo, NY 14214-2152  
Phone: 800.333.0578 | Fax: 716.833.2402  
Email: [Info@BerensonHardware.com](mailto:Info@BerensonHardware.com)  
[www.BerensonHardware.com](http://www.BerensonHardware.com)

**FOLLOW US ON SOCIAL MEDIA!**



*Scan the QR code for easy access to our social media pages.*

© 2023 Berenson Corp

23.01  
0515-MARK-01

